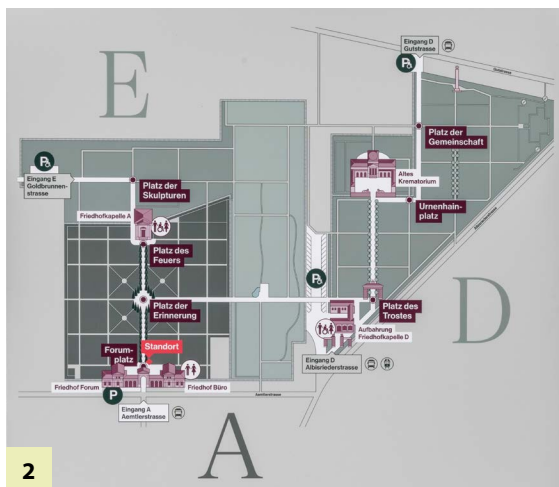
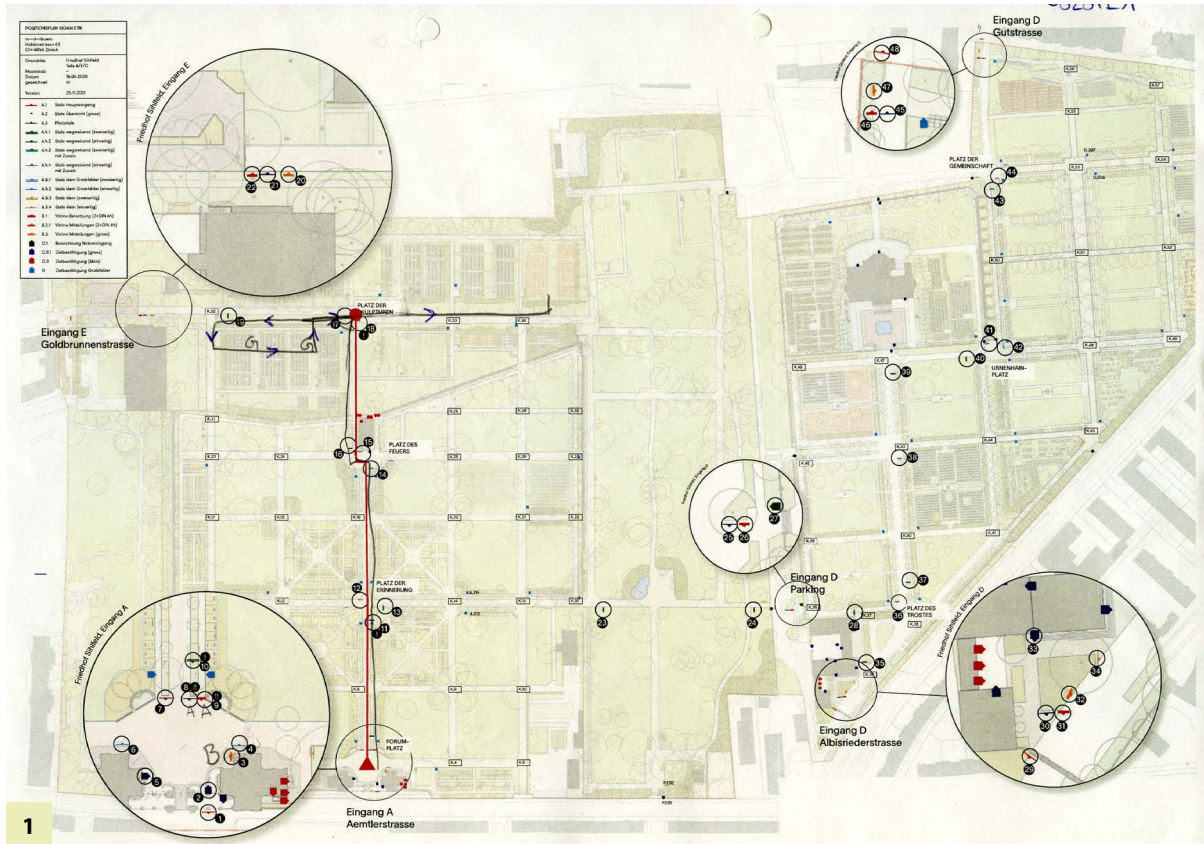


Sihlfeld Cemetery - Zurich, Switzerland

Supplementary Maps and Photos to Accompany The Journey to the Grave



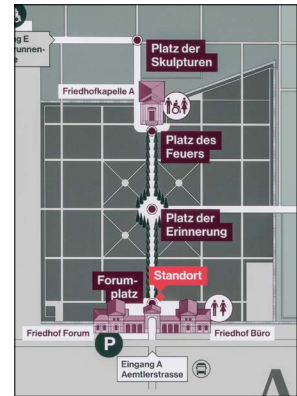
MEMORY LANDSCAPES: SIGNAGE FOR ZURICH'S CEMETERY SYSTEM

The city of Zurich introduced a new signage system with the concept "Memory Landscapes." The system orients the visitor to major sites and landmarks (Plätze) within the cemetery and shows visitors the ideal path to reach their destination. The design system was conceived and implemented by m—d—buero design.

1. Signage program showing placement and type of signs. Red handwritten path shows ideal path in sector A. 2. Final orientation map showing the different sectors and iconic renderings of the major cemetery landmarks.

Entire Path of Target Person: Entrance A (Eingang A) to Place of Sculptures (Platz der Skulpturen)

ENTRANCE A (EINGANG A) & FORUM PLACE (FORUMPLATZ)

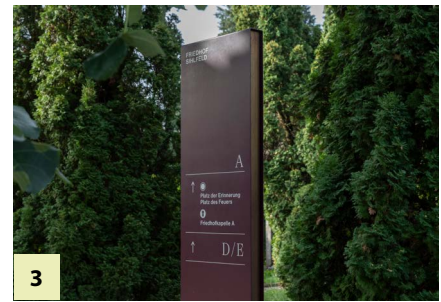
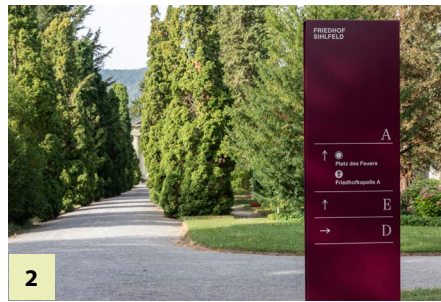


1. Signage at Entrance A before visitor enters cemetery. 2. Informational signage near the Forumplatz buildings. 3. Information board with general information. 4. Wayfinding signs at the edge of the Forumplatz. 5. Details of the wayfinding sign at the edge of Forumplatz showing the whole cemetery layout and information about ceremonies and burials. 6. Sign identifying location Forumplatz and showing more detail of the Forumplatz area. 7. View of Entrance A from within the cemetery and rear view of wayfinding signage in photo 5 and 6.

PLACE OF REMBRANCE (PLATZ DER ERINNERUNG)



1. Sign identifying the Platz der Erinnerung and showing more detail of the zone. 2-5. Signs at the major intersection of the Platz der Erinnerung showing directions to the major sectors of the cemetery.



PLACE OF FIRE (PLATZ DES FEUERS)



1. Sign identifying the Platz des Feuers and showing more detail of the zone. 2. View from the Platz der Erinnerung towards Chapel A in Platz des Feuers. 3-4. Signs directing visitors towards the Platz der Skulpturen.

PLACE OF SCULPTURES (PLATZ DER SKULPTUREN)



1



2



3



4



5

1. Sign identifying the Platz der Skulpturen and showing more detail of the zone. 2. View from the Platz des Feuers towards Platz der Skulpturen. 3. Signage identifying numbered plots. 4. Markers in the Platz der Skulpturen. 5. Sign indicating an exit at the edge of sector E.

54

PATHWAY CONNECTING SECTOR A AND D



1



2



3



4



5

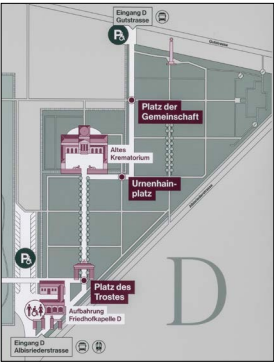


6

1-3. Taking the path on the right of the Forumplatz towards sector D: around the bend and eventually intersecting with the path shown in 4-6.
4-6. Path connecting Platz der Erinnerung with the sector D parking lot.

Path from Entrance D (Eingang D) and Place of Consolation (Platz des Trostes) to Community Square (Platz der Gemeinschaft)

ENTRANCE D (EINGANG D ALBISRIEDERSTRASSE)



1. Entrance into sector D of the cemetery from Albisriederstrasse. 2. Closeup of signage at the Entrance D gate. 3. Entrance D signage near Chapel D showing map of entire cemetery. 4. Information bulletin board at Entrance D. 5. View of Entrance D from within the cemetery. 6. Signage directing visitors towards different sectors of the cemetery.

PLACE OF CONSOLATION (PLATZ DES TROSTES)



1



2



3

1. Archway from Entrance D into Platz des Trostes. 2. Platz des Trostes looking towards the Old Crematorium in the Urnenhain-platz zone. 3. Detail of Platz des Trostes zone. The plot numbers shown in 3 evolved historically and cause confusion while navigating the cemetery. Therefore these numbers are not shown on the overview plan and are only shown on the plans of the squares.

URN GROVE (URNENHAIN-PLATZ)



1



2



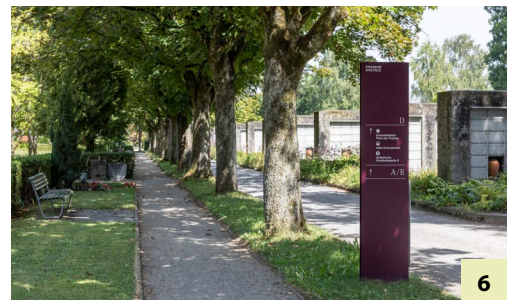
4



5



3



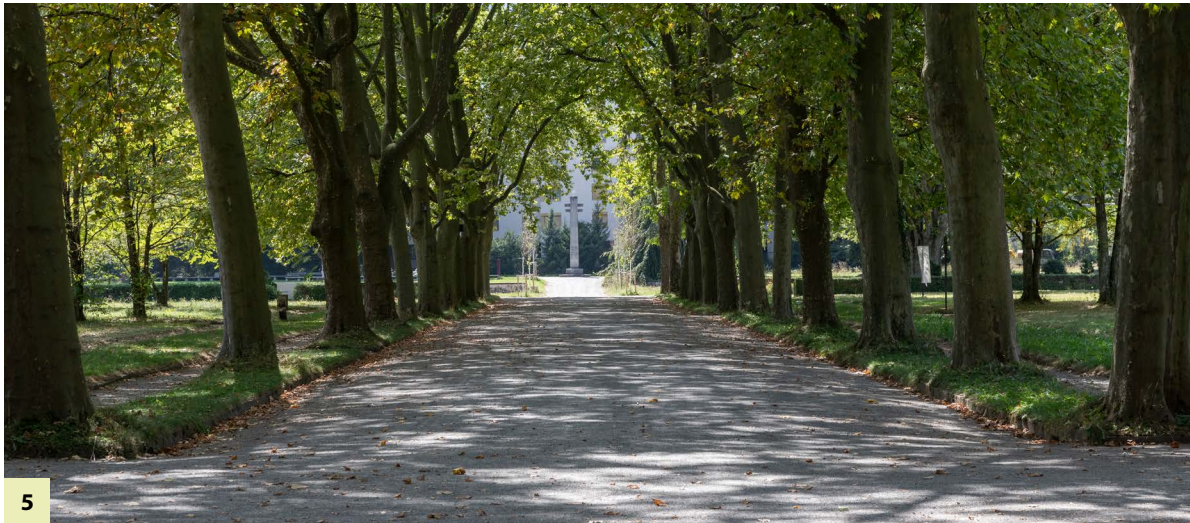
6

1. Detail of the Urn Grove (Urnenhain-platz zone). 2. Signage directing visitors from the Urnenhain-platz zone towards numbered plots in the Community Square (Platz der Gemeinschaft). 3. The Old Crematorium which serves as a major landmark in the Urnenhain-platz zone. 4. Signage at the intersection between the Old Crematorium and Urn Grove. 5. View towards the Community Square from path between the Old Crematorium and the Urn Grove. 6. Looking back towards the Old Crematorium with Urn Grove on the right.

COMMUNITY SQUARE (PLATZ DER GEMEINSCHAFT)

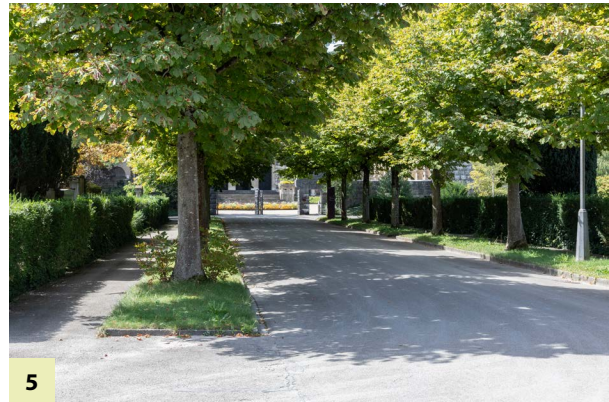
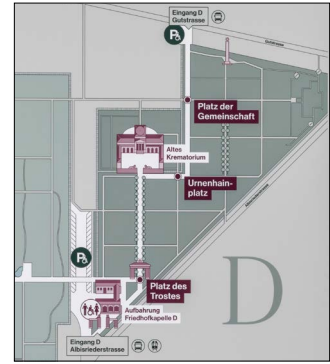


1. Detail of wayfinding signage showing Community Square (Platz der Gemeinschaft) zone. Notice the change in orientation of the map. 2. Map and information board at the Entrance D Gutstrasse. 3-4. Community Square zone. 5. View from Urnehain-platz zone looking towards the artwork in the center of the Community Square.



Additional Entrances and Photos from Sector D

ALTERNATE ENTRANCES FROM THE SECTOR D PARKING LOT



1-2. Entrance from Parking Lot D (Parking lot adjacent to Albsriederstrasse entrance) looking towards the sector D chapel on the right.
 3. View from Parking Lot D towards the side entrance to A and E sector.
 4. Additional entrance from Parking Lot D into sector D leading to path connecting Platz des Trostes and Old Crematorium. 5. Looking left from side entrance towards Old Crematorium. 6. Signage at near the gate/ entrance an the front of the Old Crematorium.