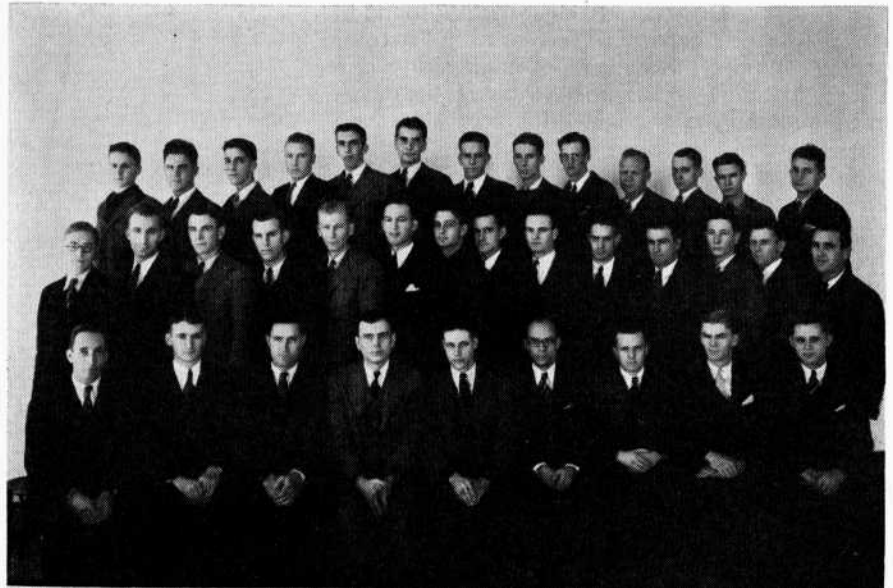
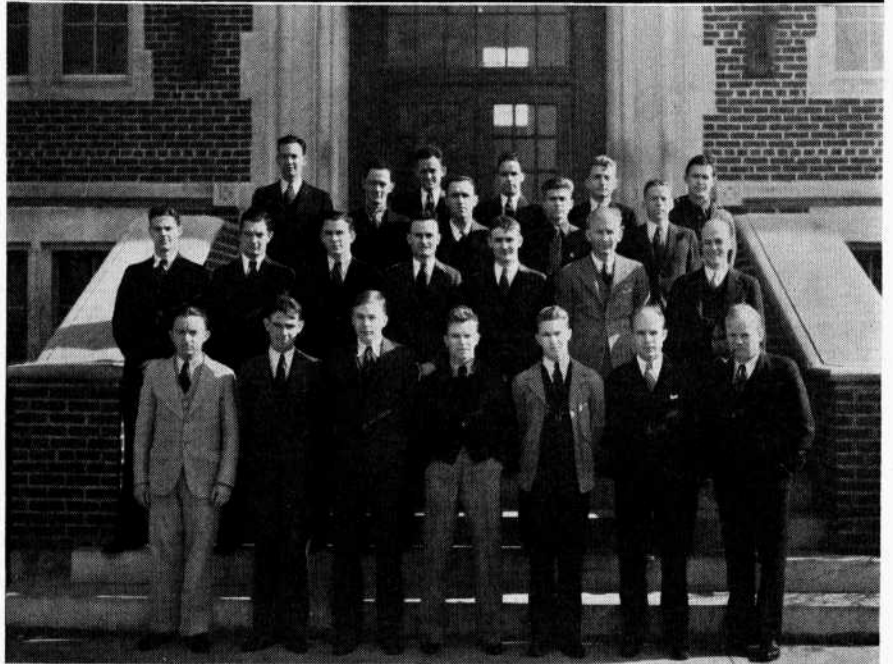


# Honormen



Here are the members of the engineering honor societies. Upper photo is of Sigma Tau, top row, left to right—Jesse Neal, Lester Puckett, Dick Swan, Stuart Davis, Robert Barbour, Scott Hammond, Foster Whiteside, George Wight, Walker Jones, Frank Willibrand, Bus Moore, Billy Owsley, Sam Alexander; middle row—Henry Schaefer, William Counts, Lee Minter, J. Ryan Walker, Frank Ittner, Bob Feemster, Ray Will, Ted Bloss, Ray Cooper, Charles Hewett, Melvin Culbertson, Bob Kutz, Cecil Armstrong, Elmer Gardner; bottom row—Elmer Prag, Baxter Scoggin, Joe Conner, Neal Prichard, Kenneth Gillespie, Bill Fell, Dan Wood, Cliff Lane, William Burtschi



Saint Pat's Council—top row—left to right—Robert Feemster, Taft Evans, Ted Bloss, Elmer Gardner, James Callahan, Maurice Hefley, Sam Alexander, Foster Whiteside, William Taylor; middle row—Dick Williamson, Ray Will, Lee Minter, Ray Cooper, Baxter Scoggin, Frank Ittner, Paul Thurber; bottom row—Roe Carson, Erwin Chiles, Henry Schaefer, Gus Gerbracht, Billy Owsley, Bill Fell, Frank Willibrand

Tau Beta Pi—top row—left to right—Jesse Neal, Lester Puckett, Dick Swan, Stuart Davis, C. B. Truitt, Dick Williamson, Scott Hammond, Bob Kutz, Foster Whiteside, Sam Alexander, Frank Willibrand, Billy Owsley; middle row—Elmer Prag, William Counts, Frank Ittner, Bob Feemster, Ray Will, Ted Bloss, Ray Cooper, Charles Hewett, Paul Thurber, Harold Kuhlman; bottom row—Neal Prichard, Henry Schaefer, Baxter Scoggin, Elmer Gardner, Kenneth Gillespie, Bill Fell, Dan Wood, Cliff Lane, Cecil Armstrong

