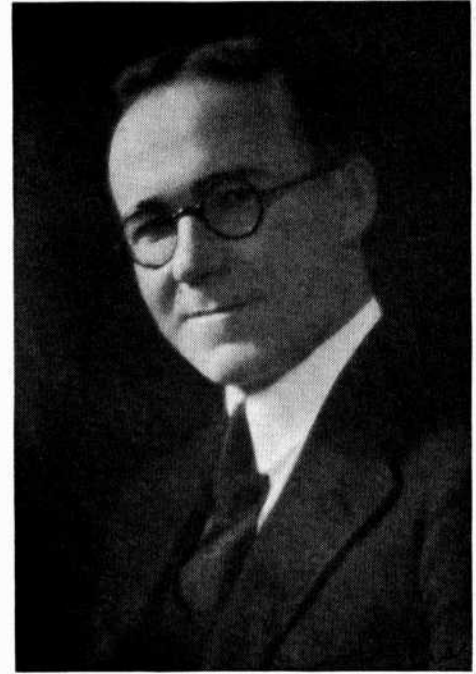


Verne E. Alden, '11 eng., is power engineer for the Stone and Webster Engineering Corporation of Boston. For the Westinghouse company he caused a redesign of power transformers that permitted of more economical manufacture



Noted engineers-- Verne E. Alden

An engineering education gained at the University of Oklahoma saved one of the greatest electrical manufacturers of America more than the cost of educating several classes at the university through a redesign of power transformers.

Thus one gets at the real value of democratic education—society is repaid in many ways through increased production, or in greater comforts of living.

Verne E. Alden, '11 eng., is the Sooner whose design effected an economy in the manufacture of transformers for the Westinghouse Electrical and Manufacturing Co.

Mr Alden was born May 31, 1890, and in forty years of living has not only achieved notable success but he has made substantial contributions to engineering progress. He attended the University of Oklahoma, where he was a member of Kappa Sigma fraternity, and received the bachelor of science degree in electrical engineering in 1911.

Soon after leaving school, he was married. The Aldens have one child.

Mr Alden joined the staff of the Westinghouse company shortly after leaving school. He took the apprentice course and worked in various departments of that firm. He remained with Westinghouse until 1918, and while with it, was responsible for the redesign and consequent material reduction in cost of manufacture of power transformers.

From 1918 to 1926 Mr Alden was with the Consolidated Gas Electric Light and

Power Company, Baltimore, Maryland, acting as assistant to the general superintendent. In this capacity he engaged in detailed studies of the trend of steam station design and compiled data on 58 of the largest steam generating stations in the world.

Mr Alden next spent two years with Stone and Webster as an engineer in the mechanical division and in 1928 became power engineer for that company. During this time he was engaged in a consulting capacity for several projects and had charge of the design of steam generating plants for the Vacuum Oil Company, the Virginia Electric and Power Company and the Atmospheric Nitrogen Corporation.

Mr Alden is a member of the A. I. E. E. and an associate member of the A. S. M. E. At various times during the last ten years he has served as a member of the prime movers committee of the National Electric Light association; as a member of the power generation committee of the Association of Edison Illuminating Companies; as chairman of the power generation committee of the A. I. E. E.; and as chairman of the executive committee of the steam power division of the A. S. M. E.

▲ ▲ ▲

Sigma Gamma Epsilon

Sigma Gamma Epsilon, national professional fraternity for students in geology and allied subjects, was established on this campus in 1915. The local chapter

was the third chapter admitted to the national organization, which at present comprises twenty-three chapters in the leading geology schools of the United States. Last spring the national convention was held at the University of Oklahoma at the time the Wild Mary Sudik well was out of control in the Oklahoma City oil field. The visiting delegates went home with some vivid pictures of Oklahoma hospitality and spouting oil wells.

The purpose of the organization is to promote the study of geology and allied subjects; also to stimulate good fellowship among its members. The membership of Sigma Gamma Epsilon comprises many student and alumni geological and petroleum engineers.

Dr Charles E. Decker, sponsor for the local chapter, is now serving his fourth two-year-term as national president. Before being elected to this office, he served for six years as national secretary and treasurer.

This fraternity is a member of the national professional interfraternity conference.

Membership in the fraternity indicates that a student is in the upper fourth of his class scholastically because a B-minus average is necessary for two semesters preceding pledging. Junior standing is necessary for eligibility.

The present officers of the local chapter are: Cecil Lalicker, president; Ed Heston, vice-president; Galen Byron, secretary and treasurer; and Dick Williamson, corresponding secretary and editor.