

## Political Sooners

**B**Y the time this appears, Joshua Bryan Lee, graduate of the University in 1917 and member of the faculty since that time, will either be the Democratic nominee for the United States Senate, or Governor Ernest Whitworth Marland will have pulled a surprise almost as astounding as the one Mr. Lee was credited with when he led the Democratic ticket in the first primary.

The situation, as voters went to the polls July 28 for Oklahoma's run-off, found Josh Lee a heavy favorite to secure the nomination, which is tantamount to election because of a scarcity of Republicans in Oklahoma.

In the first primary the official vote totals showed: Josh Lee, 168,030; E. W. Marland, 121,433; Gomer Smith, 119,585; and Incumbent Thomas Pryor Gore, 91,581.

Both of the candidates immediately made a bid for the Gomer Smith and Tom Gore votes with final nomination dependent largely upon the ability to cut heavily into these 201,000 votes.

Win or lose, the rise of Josh Lee was easily the most outstanding incident of the July elections. Successful two years ago in his first political race, he was sent to congress from the Fifth District.

When he entered the senatorial running three months ago, he picked the toughest race of the entire election. For his opponents he had Governor Marland, Incumbent Senator Gore, and Townsendite Smith.

Political observers were given a severe jolt when Josh led the Democratic ticket. He was picked to fight it out for second place with Governor Marland with Gomer Smith a possibility for second. Senator Gore was regarded as a favorite to be high man.

The story of Josh's rise is an intriguing one. He came west from Alabama in 1895 when he was but three years old and settled with his parents near Hobart. He adopted the middle name Bryan when he heard William Jennings Bryan make a speech in Hobart in 1902.

He attended school at the Baptist Academy, Blackwell, and Oklahoma Baptist University, Shawnee, and came to the University with sophomore standing in 1914.

Working his way through school, he was outstanding in debate and oratory. He became a member of the local fraternity which later became Phi Gamma Delta.

As a senior, he won the national oratorical championship in 1917 with an address, "Lay the Axe to the Root of the Evil."

In the fall of 1917, he joined the faculty as a teacher of public speaking. After one year, he enlisted in the army and was sent to Camp Cody, New Mexico, to be trained as a private in the infantry.

He sailed for France a month before the World War ended and was to be sent into active front line duty if another push was needed to end the war.

He stayed in France and Germany the following year as an entertainer for the Army of Occupation. He appeared at various camps and delivered talks and readings.

In 1919, he returned to the University as a faculty member and remained in that capacity until January, 1934, when he was granted a four-month leave of absence to campaign for Congress in the Fifth District. He beat the incumbent and two strong Oklahoma City candidates with a clear majority in the first ballot.

In Congress, he quickly made a reputation as a leader of New Deal forces. His favorable votes on AAA, TVA, and farm relief bills endeared him to rural Oklahoma.

Then, three months ago, he decided to run for the Senate instead of seeking re-election as fifth district Congressman or congressman-at-large.

He was married to Louise Gerlach, a senior in the school of dramatic art, early in 1923. They have two children, Robert, eleven years old, and Mary Louise, who will be five years old in October.

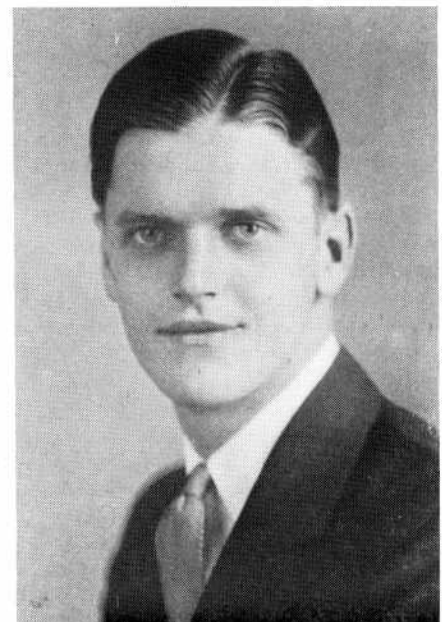
Mr. Lee's secretary and headquarters manager is George McElroy, '34 law, business manager of *The Sooner Magazine* for two years. One of his closest backers and advisers is A. P. "Fish" Murrah, '28 law, Oklahoma City.

Many other University graduates played important parts in his first primary success.

In other political races of this summer, numerous University alumni appeared to be headed for re-election and for new positions. The second primary, in a number of cases, was to decide the fate of many.

In the congressional races, for instance, Jed Johnson, '15 ex, won the sixth district place in the first primary with 30,592 votes to 20,995 for Toby Morris, his only opponent.

Will Rogers, '30 M.S., seeking re-election as congressman-at-large, barely missed getting a clear majority in the first primary even though he had fifteen opponents. He received 173,792 votes to 27,892 votes for Sam Houston III, Claremore. The large array of other candidates drew



Here are three of the thousands of University alumni who played important parts in the Josh Lee boom for the Democratic nomination for the United States Senate. At the top is George McElroy, '34law, who was Congressman Lee's secretary during the past two years and headquarters manager during the current campaign. Below are Hicks Epton, '31law, Wewoka, and Joe Fred Gibson, '36law, Wellston, just two of the hundreds who managed local and county campaigns.

MacDonald; and Incumbent Don Wilbanks, '22law, had a run-off against W. N. Berry in the Hughes and Okfuskee county district.

Another incumbent University senator was assured of a place when he won the Democratic nomination in the first primary. He is Tom C. Waldrep from the Pottawatomie County district.

A number of Sooner graduates again will be in the state house of representatives. A total of twenty-nine were in the house during the last session.

In the finals without a run-off race were Incumbents Sam Whitaker, '31as, '35law, Stephens County; Ben Huey, '31law, Norman, Cleveland County; Leon C. "Red" Phillips, '16law, Okemah, Okfuskee County; Webster Wilder, Jr., '33as, '33law, incumbent Republican of Cherokee, Alfalfa County; Bryan Billings, '32ex, Oklahoma County, No. 2; and Murray Gibbons, '15ex, Oklahoma County, No. 7.

University students and graduates with run-off opponents are Incumbent Rowe Cook, '32law, Atoka, Atoka County; Dale Brown, '37bus, Coal County; Finis C. Gillespie, Jr., '35law, Kiowa County; Incumbent Herbert Branon, '35as, '38law, Muskegee County; Incumbent Charles W. Schwoerke, Oklahoma County, No. 1; Incumbent William O. Coe, '28law, Oklahoma County, No. 4; Incumbent Aubrey M. Kerr, '28law, Pontotoc County; Leonard Carey, '24law, Pottawatomie County; and several others.

Numerous graduates won county races while many have run-off opponents. For instance, Lewis R. Morris, '15as, '15M.A., '17law, had no opponent for the county attorney's office in Oklahoma County; Aubrey Moses, '26as, '28law, had no opponent for county attorney in Cleveland County; and Dick Pendleton, '26law, was renominated for county judge in Cleveland County, the University district.

enough votes that the congressman fell 12,417 short of a majority.

A third Sooner graduate congressional incumbent, Wilburn Cartwright, '20law, Third District, had 36,012 votes to 20,823 for Wayland Childers, 13,256 for Porter Newman, 3,896 for J. D. Bayless, and 3,027 for A. D. Phillips. He entered the run-off against Wayne Childers.

Sam Massingale, the father of Betty Lou Massingale, '33as, Cordell, had least trouble being renominated. He polled 37,710 votes in the Seventh District in the southwestern part of the state. His three opponents had a total vote of 14,000.

Wayne Bayless, '20law, easily won the Democratic nomination for re-election to the supreme court from the First District over two opponents.

In the Sixth District, Thurman Hurst, '12law, was placed in the run-off against Edwin R. McNeill for the supreme court seat. Hurst, a district judge, polled 19,358 votes to McNeill's 12,872 while two other opponents had enough to keep Hurst from winning in the first election.

Four state senators who are graduates of the University will return to the next legislative session as hold-overs without a race this summer. They are H. C. Ivester, '27law, Sayre, District Two; Charles B. Duffy, '22law, Ponca City, member of the alumni association executive board, District Nine; James A. Rinehart, '23law, El Reno, District Fourteen; and Dennis Bushyhead, '29law, Claremore, District Thirty-three.

Three other Sooners had run-off races to determine whether they will be sent to the state senate.

In the Carter, Love, and Murray county district, Joe B. Thompson, '27law, went into the finals against Incumbent Louis A. Fischl. In the Bryan, Atoka, and Coal county District, Sam Sullivan, '37law, went into the run-off against Incumbent John A.

## All-Sports Champs

**A** GAIN University of Oklahoma athletic teams have dominated Big Six sports competition by winning the all-sports championship race from Nebraska teams.

General excellence in all sports races gave the Sooners the close margin victory over the Nebraska Cornhuskers. Both Nebraska and Oklahoma won three sports championships and both were co-champions in two other divisions.

The Nebraskans fell to sixth place in wrestling and took a fourth in two-mile team racing. The Oklahomans had their only fourth in outdoor track. All other Sooner teams finished among the first three in final standings.

The Sooner basketball team and Jack Davis, the one-man swimming team, took third places. The other seven Sooner teams finished either first or second.

The coaching staff which afforded the university this all-sports championship, which by the way was the seventh in the eight years the Big Six conference has been in existence, includes:

Director of athletics—Captain Lawrence McC. "Biff" Jones.

Assistant director—King George Price, '25ex.

Football staff—Captain Jones, head coach; Tom Stidham, line coach; R. H. "Doc" Erskine, backfield coach with Captain Jones; Frank "Spec" Moore, end coach; Lawrence "Jap" Haskell, '22bs, freshman coach; Paul Young, '35as, assistant freshman coach; Hugh V. McDermott, '20as, scout; Harlan "Pat" Page, student assistant utility coach.

Basketball—Coach Hugh V. McDermott, '20as.

Track and two-mile racing—Coach John Jacobs, '16as.

Baseball—Coach Lawrence "Jap" Haskell, '22bs.

Wrestling—Coach Paul Keen.

Tennis—Coach Leslie Hewes, '28as.

Golf—Coach Bruce Drake, '29as.

Swimming—Coach Bruce Drake, '29as.

Counting a championship as one point, a co-championship as one and one-half, a second place as two points, a third place as three points, etc., the Sooners had a low score of 20 points. The Nebraskans were next with 25½ points.