

'29law, Alva. Bill Powers, '36law, has succeeded Naifeh as president of the University league.

Hewes is Tennis Coach

Leslie Hewes, '28as, young geography instructor who has been appointed tennis coach at the University of Oklahoma to succeed John O. Moseley, who recently accepted the presidency of Central State Teachers' college, Edmond, has played the game most of his life and even coached in 1929 at Western Kentucky State Teachers' college at Bowling Green, Kentucky.

Hewes started at Guthrie high school where in 1924 he went to the finals in the state high school tournament at Stillwater, and to the semi-finals at Norman, being put out each time by Jake Ingraham of Tulsa, state champion.

In 1926 he was a squad man at Oklahoma in the days of such Sooner cracks as Fred Royor, Dick Mason and Bob Brandenburg.

In 1928 he took a B. A. degree from Oklahoma and now lacks only his thesis of completing a doctor's degree in geography at the University of California.

Three Registration Records Fall

Enrolment records for the fall semester, the spring semester and for the year's total have been broken, George Wadsack, '18ex, registrar, has announced.

During the fall semester 5,548 students enrolled. The spring term finds an enrolment of 5,148 students, the seasonal drop being slightly less than usual. The total number of different students enrolled during the school year, summer term excluded, is 6,110, almost one hundred greater than last year.

Improving business and farm conditions were given as the probable reason for the gains.

The student personnel at the University still was shown as extensively drawn from farm homes. In giving the professions of their parents, 1,007 students said their fathers were farmers, 735 were merchants and 260 were public officials.

The National Youth Administration project has been responsible for keeping 600 students in school during both semesters.

John Newbern is Co-Author

John Newbern, '28ex, is co-author and compiler of a new volume about Texas which was released late in March.

The title of the book is *Odd Texas*, the roundup of queer and amazing facts about wild and wooly Texas. Jack Harper, Dallas, and Newbern are the authors. The book sells for one dollar and was published by Banks Upshaw and Company.

It includes 101 illustrations dealing with Texas history and carries out the "Believe it or Not" idea in presenting unusual aspects of history of the Lone Star state. Newbern is employed by the Harper Engraving company in Dallas. The book is

Fletcher S. Riley, '17as, justice of the Oklahoma Supreme Court, has accepted an invitation to be commencement speaker at University of Oklahoma graduation ceremonies in June. He was a Lawton attorney before he became a member of the supreme court. It will be the fourth consecutive year during which a graduate of the University was named commencement speaker. They were: in 1933, George B. Parker, '08as; in 1934, George C. Smith, '08; and in 1935, John G. Hervey, '23as, '25law.

expected to be a good seller during the Lone Star Centennial.

"Doll" Foster in "Script"

Roy Abner "Doll" Foster, '20ex, formerly of Norman, has had several stories in Rob Wagner's *Script*, California weekly, recently.

One of his stories, "*Choc*" *Beer Matrimony*, appeared in the February 15 issue of the publication which is the *New Yorker* of California. Foster is living in Hollywood and is spending his time writing short stories.

Thetas Win Grade Cup

Kappa Alpha Theta and Sigma Delta Tau won sorority grade average cups for the first semester.

The Kappa Alpha Theta chapter won the award in the first group which includes houses of at least thirty members. Sigma Delta Tau won the group two award for houses of less than thirty members for the third consecutive year.

Following are the records of both groups:

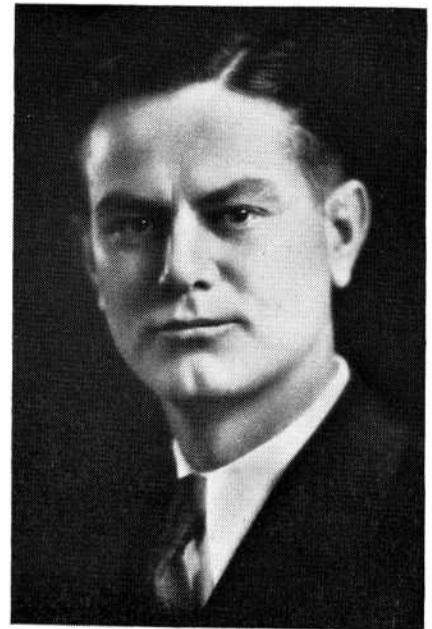
Group One	
Kappa Alpha Theta	1.8134
Pi Beta Phi	1.6633
Gamma Phi Beta	1.6401
Delta Gamma	1.6263
Alpha Chi Omega	1.6137
Delta Delta Delta	1.5580
Kappa Kappa Gamma	1.5445
Chi Omega	1.3679
Group Two	
Sigma Delta Tau	1.7766
Alpha Phi	1.3367
Alpha Xi Delta	1.1236
Phi Mu	1.0843
Alpha Gamma Delta	.8043

Ely Added to Geology Faculty

Hugh M. Ely, '27as, has been appointed to a teaching assistantship in the University school of geology. He will be in charge of laboratory sections in beginning geology classes. John L. Fosness, University of Minnesota, also has been added to the staff to assist in the division of mineralogy.

Sibley on Minnesota Faculty

Mulford Q. Sibley, '34M.A., has been appointed to an instructorship in world politics and government at the University of Minnesota. Minneapolis.



Sibley was graduated from Central State Teachers college, Edmond, in 1933. He completed work toward an M. A. degree at the University the following year, writing his thesis on *American Nationalism Since the World War*. He was appointed to a fellowship at the University of Minnesota last year. He will continue work on his doctorate while he is teaching.

Reunions Are Coming

Members of the 1906, 1911 and 1916 graduating classes should begin making plans to return for the thirty, twenty-five and twenty-year reunions which will be held on the Oklahoma campus during the commencement period early in June.

Graduates of other classes will be welcome back for the commencement exercises, but special events are being planned for these three classes.

Committees to have charge of the banquets of each of the groups are at work to get as nearly one hundred percent attendance as possible. From all parts of the country will come the Sooner graduates of years past.

Bulletins to members of each of the three classes will be mailed during the next month. Friends who have not seen each other in recent years will make special efforts to hold reunions during the period.

A senior-alumni dance probably will be held the night before the reunion banquets.

"Come on back to the campus for a really good session on what you've been doing and what I've been doing for the past years" will be the bye-words for the hundreds of members of the three classes being honored this year.