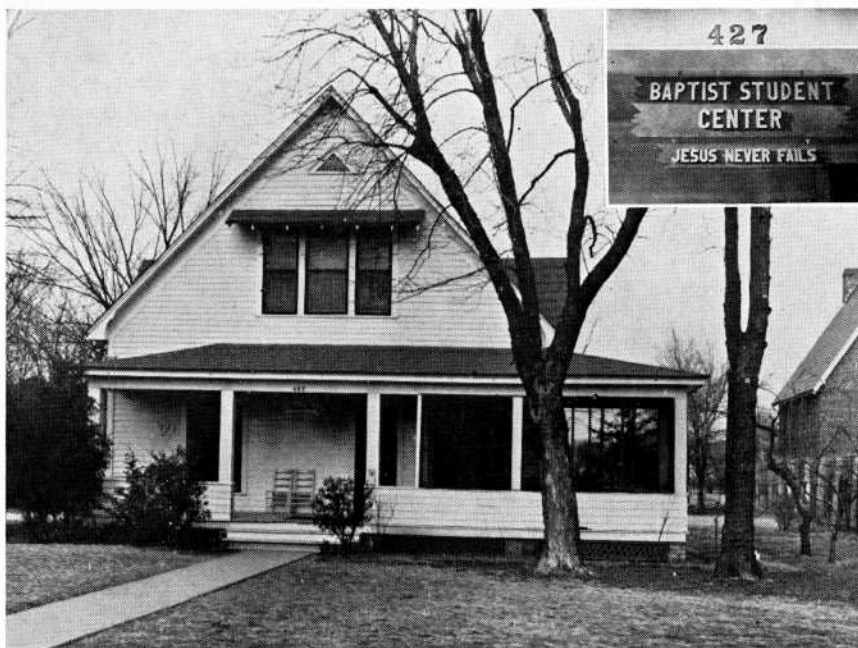


A Student Religious Center

IMAGE IS NOT AVAILABLE
ONLINE DUE TO COPYRIGHT RE-
STRICTIONS.

A paper copy of this issue
is available at call number
LH 1 .0686 in Bizzell
Memorial Library.



The Baptist Student Home, on Boyd Street across from the campus

OFFERING a comprehensive program of service to Baptist students at the University of Oklahoma, an \$8,000 Baptist Student Center came into existence at Norman this year as the first of its kind sponsored by any denomination on an Oklahoma campus.

Even more notable is the fact that there are only two other such Baptist Student Centers on state university campuses in the southern portion of the United States.

The Student Center was financed through the combined efforts of students, Oklahoma churches and the Baptist General Convention of Oklahoma. It was patterned from a similar building at Louisiana State University, where an extensive devotional and enlistment program has been developed.

The Student Center houses all Baptist activities for students during the school week. Nineteen separate departments, each headed by a student, are maintained.

The aim of the project, states Miss Susan Daniel, Baptist Student Union director, is to satisfy the ever-prevalent demand for a link between University students and the church. The B. S. U. is not a separate organization but a church unit designed to claim the interest of young men and women by using them in the capacity for which they are best suited. Or it may be termed a student organization for the development of personal spiritual experiences and enlistment in the local church.

However it is termed, or whatever its goal may be, the organization is moving toward that goal under expert supervision.

Miss Daniel, who is B. S. U. director on the University campus, came to Norman four years ago as the first denominational student secretary employed in Oklahoma. Since that time she has steadily built up student interest in the church.

The Student Center itself, located at 427 West Boyd street is set well back from the street, just west of the President's Home. Remodeled from a former Norman residence, it is a roomy white frame structure fronted by an old fashioned hospitable porch and is surrounded by shade trees and a spacious lawn. There is nothing unique about the house; its description might well fit that of hundreds of family dwellings in the state, a fact which may be responsible for its pleasant and home-like informality.

Inside, the rooms are decorated to form an attractive but practical background for the many activities it must shelter. The assembly room, reading room, kitchen and secretary's office are the places of major interest. The second floor is used as the caretakers' apartment.

From this location all the Baptist activities on the campus are supervised. The Student Center is open for daily use, subject to University regulations.

Ranking high in interest in the B. S. U. is the enlistment program, through which students are urged to join the local church or to transfer their membership from other Baptist churches throughout the state. About 275 are student members this year. Enlistment committee meetings are held in the assembly room.

Social plans for the year include eight

large general student parties, given at one-month intervals, and two banquets. During seasons when the weather is favorable, informal socials will be held on the lawn.

Devotional schedules are made up of Bible class meetings, prayer services, general devotionals, Candle Light and Camp Fire Prayer services, and the meeting of the Master's Minority, a prayer session held from 7:30 to 8 o'clock every morning. Noon-day prayer meetings are held daily from 12:45 to 1 o'clock with an average attendance of between fifty and seventy students.

Tithing through the local church has been encouraged among the students, and Miss Daniel recently reported that approximately \$1,600 has already been pledged through this program.

An opportunity for training in radio work is offered through a weekly broadcast over University station WNAD, and musical training is given through orchestral and vocal groups.

Under the heading of "personal service" falls the practice of sending birthday greetings and sympathy cards. Fellowship among foreign students on the campus is stressed.

The Young Women's Auxiliary, a missionary group, meets at the Student Center on alternate Monday evenings, and the Young Men's Brotherhood, of a similar nature, meets as a breakfast club on alternate Sunday mornings.

Students interested in journalism may assist with the editing and publishing of a four-page newspaper which is distributed each week at regular Sunday morning services at the First Baptist Church.

Every possible way is sought to combine individual talents and abilities with religious work in such a manner as to retain and vitalize the interest of college men and women.

"Denominational schools cannot compete in enrolment figures with universities," explains Miss Daniel. "Many times more Baptist students may be found in state schools than in all the Baptist colleges of this country. It is obviously necessary that the church find some way to maintain contact with these young people who will constitute the trained leadership of tomorrow. We believe the program promoted through our Student Center will answer these requirements at the University of Oklahoma.

▲ ▲ ▲

It's a promise

We'll wait patiently until next year to have Lucille McGuire, '32, join the Association again.

"Can't make the \$'s grade on the *Sooner Magazine* this year," she writes. "Yale seems to be cutting a good sized chunk out of the old money bag. I'll take out a 'life' when I get back to Edmond."

IMAGE IS NOT AVAILABLE ONLINE DUE TO COPYRIGHT RESTRICTIONS.

A paper copy of this issue is available at call number LH 1 .06S6 in Bizzell Memorial Library.