

# The Faculty

## College of Business Administration

### *Office of the Dean*

Arthur Barto Adams, Ph.D., Dean of the College of Business Administration, Professor of Economics  
Charles Franklin Daily, Ed.D., Assistant to the Dean, Associate Professor of Economics  
Jewel Inez Woodward, Ed.M., Secretary to the College of Business Administration

### *Department of Accounting*

William Kenyon Newton, M.B.A., C.P.A., Professor of Accounting  
Dewey Loyd Barnes, M.B.A., C.P.A., Associate Professor of Accounting  
Arnold Waldemar Johnson, M.B.A., C.P.A., Associate Professor of Accounting  
LeRoy Oris Smith, M.A., Instructor in Accounting  
V. Lauren Shelton, B.A., C.P.A., Instructor in Accounting

### *Department of Business Communication*

William Henry Butterfield, M.A., Associate Professor of Business Communication  
Augustin Lawrence Cosgrove, M.A., Assistant Professor of Business Communication

### *Department of Business Law*

James Carson Powell, B.A., LL.B., Professor of Business Law  
Thomas Z. Wright, B.S. in Bus., LL.B., Associate Professor of Business Law

### *Department of Business Management*

Ronald Buswell Shuman, Ph.D., Assistant Professor of Business Management  
Robert W. Field, Ph.D., Assistant Professor of Business Management

### *Department of Economics*

Edward Clarence Petty, M.A., Associate Professor of Economics  
Virgle Glenn Wilhite, Ph.D., Associate Professor of Economics  
George Albert Hoke, M.A., LL.M., Associate Professor of Economics  
Henry Grady Sloan, B.A., Assistant Professor of Economics  
Ivin Glenwood Richardson, B.A., Assistant Professor of Economics and Statistics  
Claude Arthur Campbell, Ph.D., Assistant Professor of Economics

### *Department of Finance*

John Alfred Griswold, Ph.D., Associate Professor of Finance  
Gilbert Harold, Ph.D., Associate Professor of Finance  
Isaac J. Sollenberger, M.S., Associate Professor of Finance

### *Department of Marketing*

Floyd Lamar Vaughan, Ph.D., Professor of Marketing  
Findley Weaver, Ph.D., Professor of Marketing  
Philip Calvin Albertson, Ph.D., Assistant Professor of Marketing

### *Department of Secretarial Science*

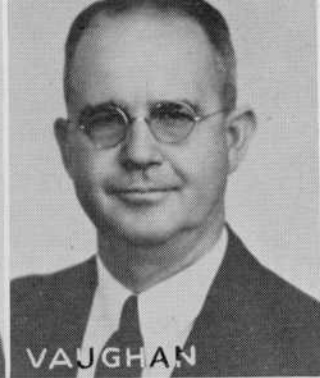
Ernest Edward Hatfield, M.B.A., Associate Professor of Secretarial Science  
Rose Katherine Leske, B.A., Assistant Professor of Secretarial Science

### *Library*

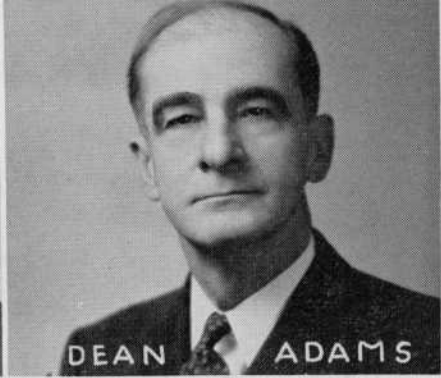
Eardeane Rector, B.A., Librarian



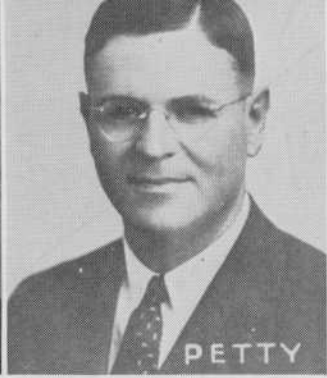
POWELL



VAUGHAN



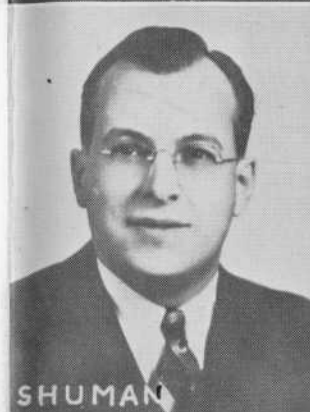
DEAN ADAMS



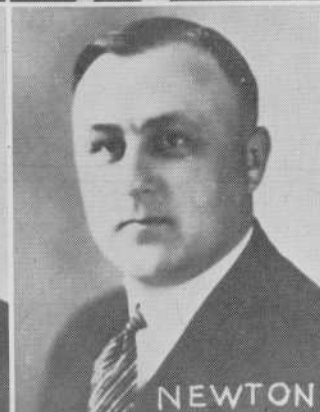
PETTY



WEAVER



SHUMAN



NEWTON



HAROLD



HATFIELD



GRISWOLD



WRIGHT



WILHITE



LESKE



DAILY



ALBERT



SMITH



RICHARDSON



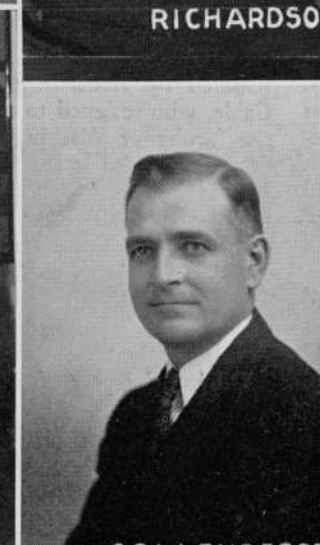
JOHNSON



BARNES



BUTTERFIELD



COLLIER EMBREY



SLOAN



CAMPBELL



FIELD



SHULTZ



COSGROVE