

Pictured above are some of the people who were responsible for the detailed planning of Homecoming. Spencer Taylor, engineering junior from Jackson, Mississippi, acted as general chairman for the group which included faculty members and students. President George L. Cross, Dean E. D. Meacham, '14ba, Ted Beard, '21ba, and Mary Lou Stubbeman, '45bs, acted as advisors to the executive board. Back row: Dean Meacham, Johnny Lane, arts and sciences senior, Pampa, Texas; Leonard Haug, director of University bands; Ben Tankersley, graduate college, Norman; Dean Couch, Chester Francis, associate professor of music education; Dr. Cross; Paul MacMinn, dean of students; Robert Lunsford III, senior law student, Pawnee; Steve Snider, arts and sciences sophomore, Mangum, and Harris Holmes, business senior, Oklahoma City. Front row: Martin Thames, education senior, Henderson, Texas; Boyce Timmons, '37Law, recorder and office manager for admissions and records office; Miss Stubbeman; Bill Hall, arts and sciences sophomore, Duncan; Perry Pound, engineering senior, Oklahoma City; Sudie Grantham, fine arts senior, Ryan; Bill Mason, arts and sciences senior, Oklahoma City; Alma McKnelly, arts and sciences senior, Norman; Bob Bristow, arts and sciences sophomore, Oklahoma City; Taylor; Paul McClung, arts and sciences senior, Norman, and Beard.

Home, Sweet Home

The University blared forth with a tremendous HOWDY GRADS on the morning of November 6.

Forty thousand alumni returned the greeting and gave forth with wide grins as they said, "We're glad to be 'home'."

Home had a lot in store for them!

Beginning with a rip-roarin' kickoff dinner in the Civic Room of the Biltmore Hotel, Oklahoma City, it ended with an alumni reception immediately after the Tiger-Sooner game in the ballroom of the Union.

Approximately 400 "students" got together in Oklahoma City the night before the big day. Their ages ranged from early 20's to—well, higher anyway.

Of course, they were a little "too experienced" to be called students, but nevertheless, with all the excitement of the Missouri-Oklahoma game, every one in attendance was singing college songs and whooping it up "just like the good 'ol days."

Saturday morning started off with a parade—and what a parade it was. Thousands of Sooner students, faculty members, visiting alumni and Normanites viewed this 1½-hour-long annual homecoming spectacle between 10:30 a.m. and 12 noon.

Four bands marched with the 66 entries in the colorful procession. Besides the famed "Pride of Oklahoma" spectators saw bands from the high schools of Norman, Wewoka, and Ardmore. Also participating were the Norman and Marietta round-up clubs.

Registration began at 8 a.m. in the foyer of the Union Building and a quick check revealed that nearly 40,000 alumni came back to see their alma mater.

But the big event of the day was yet to come. At exactly 2:30 p.m. Coach Bud Wilkinson unleashed his Sooner team to prey upon and soundly trounce the Missouri Tiger. The score tallied to a good healthy 41 to 7.

Both teams went into the game with perfect records in conference play. Oklahoma had downed Kansas State, and Iowa State. Missouri had beaten both Kansas State and Iowa State.

The importance of this traditional homecoming game was emphasized by the fact that Bill Stern, noted N.B.C. sportscaster, was on hand to broadcast the game on a national hook-up.

The campus not only teemed with the excitement of graduates and football, but also was sport-

ing what might be called a new high in homecoming attire. The most elaborate decorations ever seen on the campus had seven judges deliberating for hours as to which was the best among the 39 competing student residences.

Delta Gamma sorority and Kappa Alpha fraternity emerged winners, however, and at the Varsity Revue show in Holmberg hall Friday night, were awarded "Pioneer Women" trophies as first place winners in the house decoration contest.

Runners-up in the women's division were Chi Omega sorority and Franklin house.

Second and third places in the men's division

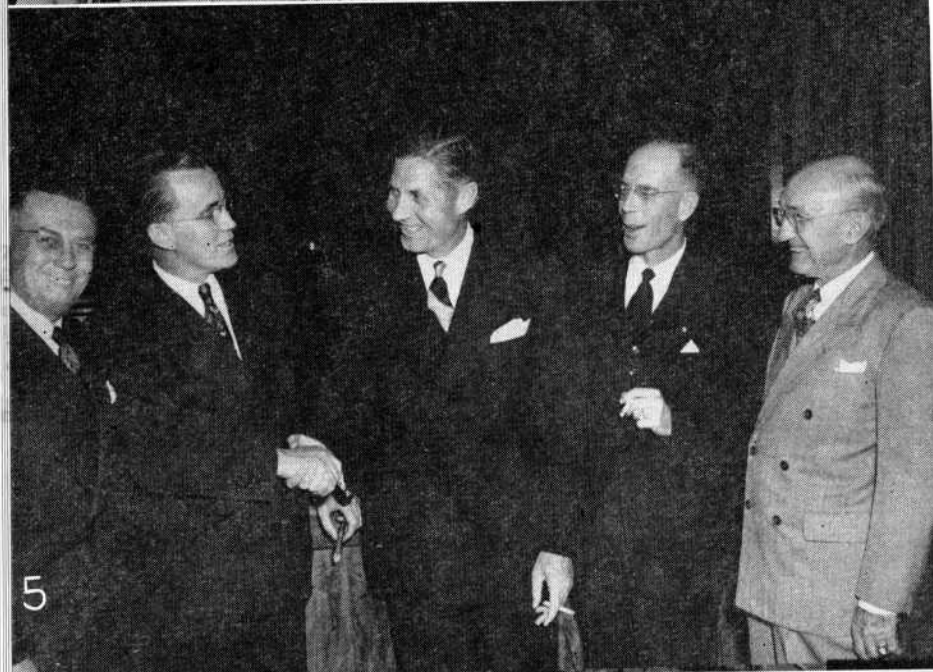
were won by Phi Kappa Sigma and Phi Gamma Delta.

A typical early pioneer settlement was depicted in the Delta Gamma yard. Prominently displayed was the Palace Hotel, "Guthrie's firstest, finest and onliest." Inviting joints included the town saloon where Queenie was currently appearing, the ever-present "Home-Cooked Meals," "Public Bath—50 cents," and "Joe's Livery Stable."

"Oklahoma State Fair" was the theme of decorations at the Kappa Alpha house. Colorful show-grounds set up in the yard featured "Taking the Tigers for a Ride." A moving merry-go-round and



A highlight of Homecoming was the picking of the Homecoming Queen. Above five beautiful and charming handmaids gather around the Queen shortly after she was presented with a huge bouquet of flowers and a plaque symbolic of her victory. The Queen, Nila Jean Caylor, Norman, senior, arts and sciences, is surrounded by, left to right, Ruth Jane Campbell, Oklahoma City, junior, arts and sciences; Sue Mayes, Oklahoma City, University College; Phyllis Crow, Oklahoma City, University College; Joan Johnston, Oklahoma City, senior, arts and sciences; and Ann Daniel, Tulsa, University College.



Home Was N

Banquets, parades and "the most lavish decorations in years" characterized the gay 1948 Homecoming which attracted 40,000 alumni.

Upper left is the Gamma Phi Beta float which copped top honors in the sorority division. They were followed by Kappa Kappa Gamma and Pi Beta Phi sororities.

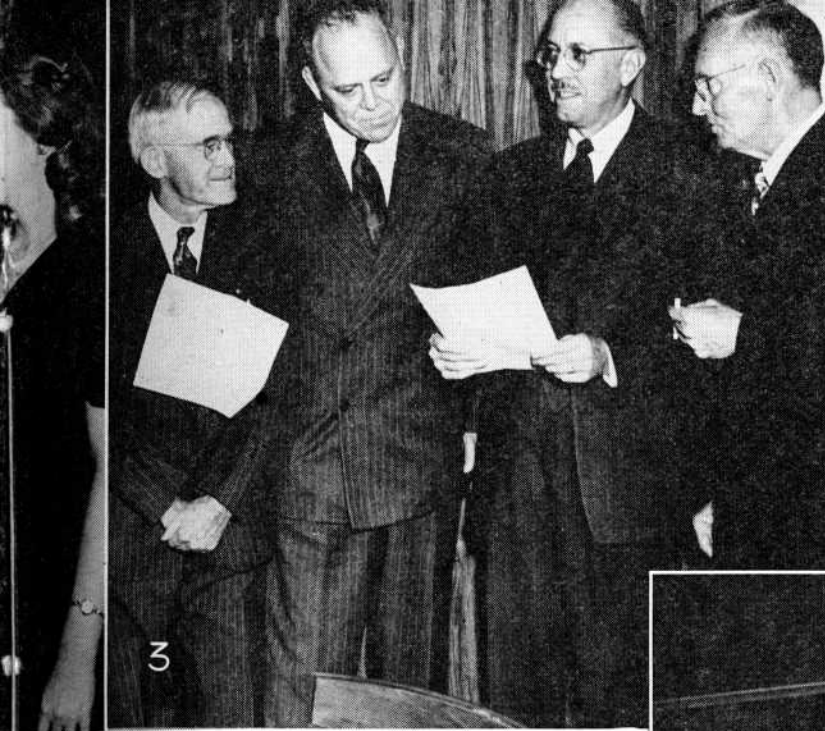
Upper center left, posing with wide grins, are the famous Steinberger football family. Left to right are: Calvin, a sophomore and a halfback on the 1949 team; Mrs. Steinberger (Frances Terrell, '23); Clinton S. '22-'23; and Kay who is a freshman at the University this year. They are all from Houston, Texas.

Upper center right, looking over a song sheet at the pre-homecoming dinner in Oklahoma City are: C. Ross Hume, quarterback on the 1896 football squad, '98ba, '00ma; "Polly" Wallace, '27ba, '35ms, Oklahoma City; Tom Sorey, '20ba, architect for the new Union Building; and Oscar W. Johnson, '02pharm, former quarterback ('00-'02) from Oklahoma City.

Upper right is a photo of a portion of the block long Sigma Nu float which captured first-place among the fraternities.

Center left talking informally are: Don Emery, '20ba, '21Law, Bartlesville; President George L. Cross; Mike Monroney, '24ba, Oklahoma City; Joe W. McBride, '28ba, Anadarko; Errett R. Newby, '07bm, '08ba, Oklahoma City.





ever Like This

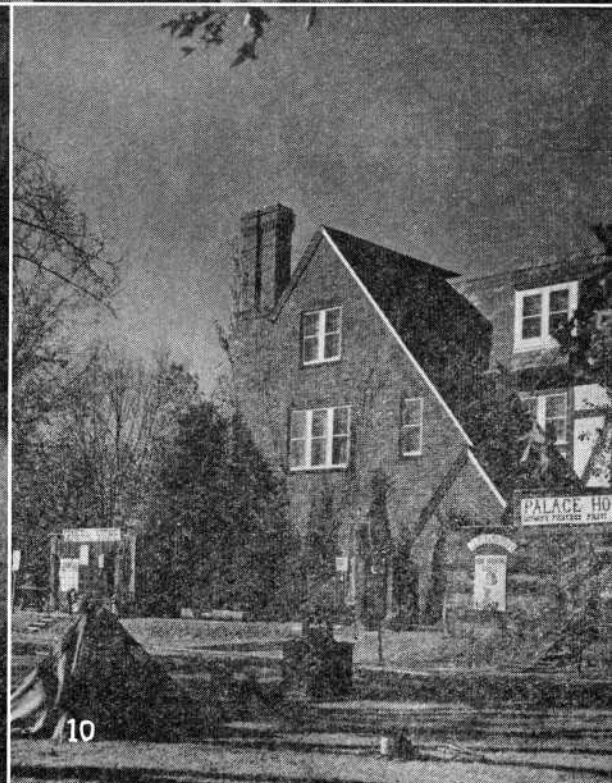
Center right pictures not one, but four of the deepest basses of the days of yore. Performing in Oklahoma City, they are: Elmer L. Fraker, '0ba, '38ma; Laile G. Neal, '23bs, '25med, Ponca City; S. Prentiss Mooney, '28, Jefferson City; and Justice Denver Davison, '15Law.

Lower left is the spectacular Kappa Alpha carnival which, besides winning first place in the men's house decorations, advocated taking the Missouri "Tigers for a Ride."

Lower center left, again at the Pre-Homecoming banquet in Oklahoma City, are, upper left to left: Guy Brown, '42ba, '48ma, Mrs. Brown, Frank Spence, '41ba, Chloe Walker, '22; and Flora B. Martin, '36ba. Upper right to right are: Jack Douglas, '36ba; Mary Elizabeth Steen, '43ba, '8ma; Mrs. W. B. Ragan, (Faye Hartman, '37bs); Mr. Ragan, '22ba, '28ma; Mrs. V. C. Bratton; and Mr. Bratton, honorary alumnus.

Lower center right, facing the camera on the left side of the table, are: C. R. Hume, '98ba, '00ma; Mrs. Hume; Denver Davison, '15Law; and Mrs. Davison. On the opposite side of the table, are: Earl Foster, '12ba, '33Law; Mrs. Foster, (Alta Sawyer, '30ma); Herbert D. Canfield, '11; Mrs. Canfield; and Errett R. Newby, '07bm, '08ba.

Lower right pictures a portion of the small frontier city of Guthrie recreated by Delta Gamma sorority. The extensive display won first place in the women's house decorations.





More Homecomers

At the Oklahoma City Homecoming-even banquet were the two groups in the top pictures.

Grover Strother, '20ba, Oklahoma City retiring president of the Oklahoma County Alumni Club is shown in the upper left picture with Ben Head, '42bus, '48Law, incoming vice-president and Dick Virtue, '44ba, newly elected president. All of the officers pictured are from Oklahoma City.

In the picture at the upper right are Clee Fitzgerald, law junior, Caddo; Mrs. Fitzgerald (Jennie Locke, '40ba, '41Lib.sci); Charles Ward, '48journ, Oklahoma City; Mrs. Ward; Preston Moore, law senior, Bartlesville; Mrs. Moore; Bob Smith, business junior, Lamont, Iowa; Mrs. Smith, (Lorraine Hoy, '46-'47); Ed Boatman, law junior, Okmulgee, and Miss Lillian Carini, University College, Okmulgee.



ferris wheel were transporting bedraggled Tigers. The test-your-strength obstacle had "Sugar Bowl" as the bell-ringer.

Float winners included, in the women's division, Gamma Phi Beta, which won first place, Kappa Kappa Gamma and Pi Beta Phi.

Sigma Nu captured first-place position among the fraternities. Sigma Alpha Epsilon and Alpha Tau Omega were second and third respectively.

The Norman FFA chapter came in first for outside organizations. For University organizations, the American Institute of Chemical Engineers claimed first division, with American Society of Mechanical Engineers and the American Society of Geological Engineers in close pursuit. All first place winners were awarded attractive bronze pioneer women statues.

Regents Mull Stadium Plan

Many requests have been received in the Alumni Office recently inquiring as to when the proposed stadium will be constructed. For the general information of all alumni the following information is being included in this issue of Sooner Magazine.

University Regents, definitely behind a plan to enlarge the University football stadium before next season, expressed doubts at their November 10 meeting that Soonerland will ever have a bowl.

The University is too far removed from heavy population centers to draw the crowds needed to finance a stadium like that at the Texas State Fair Grounds at Dallas, regents declared in informal discussions.

The type of addition to be made to Owen Field remains to be decided. The regents

Staff and Grads Gather

In the center photo are pictured members of the physical education department for women staff with Homecoming guests. Back row—Katherine Culbert, associate professor; Maurine Bowling, '31bs, Norman; Virginia Morris, '32bs, associate professor; Inez Ivy, '39bs, '40phys.ed, Norman; Mary Anne Panner, arts and sciences senior, Shawnee, and Dorothy White, assistant professor. Middle row—Carole Hass, assistant professor; Kathryn Cherry, '34bs, Oklahoma City; Ima James Reaves, former head of the women's physical education department; Wanda Jo Brown, '45bs, Miami; Frances Peters, '38phys.ed, '43m.ed; Sue Hanley, '28ba, clerical secretary for physical education for women, and Helen Gregory, associate professor. Front row—Naomi Henricks, arts and sciences senior, Oklahoma City; Elaine Mjose, instructor, and Lucile LaSalle, instructor.

Ben G. Owen, professor of physical education, and George B. Parker, '08ba, Washington, D. C., talk over old times at Homecoming in the photo at the lower left.

An informal party was held Friday night preceding Homecoming in Norman by Mrs. Phillip Kidd (Ina Johnson, '08-12) and Mrs. Ben G. Owen (Nina Bessent, '10) at the home of the latter. Pictured seated on the floor are Mrs. Fred Carter, (Alta Loomis, '06ba), Cordell and Mr. Kidd, Norman. Back row—Mrs. Kidd, Maibelle Williams, '17, Wichita, Kansas; Mrs. Walter Ferguson, (Lucia Loomis, '07), Tulsa; Mrs. Robert Webb (Blanche Morgan, '05bm), Chicago, Illinois; George B. Parker, '08ba, Washington, D. C.; Mrs. Owen; Alice Boyd, '07ba, Glendale, California, (daughter of the first president of the University), and Ben Owen, an honorary life member of the alumni association.



A highlight of the Homecoming activities was the crowning of the 1948 Sequoyah Indian Princess. She is Dolores Sanmenn, Meers, education junior.

acting just four days after 38,500 people jampacked the stadium to see Oklahoma slay the Missouri tiger, approved plans November 10 to extend the seating capacity in some manner.

Oklahoma has attracted such a crowd only twice before in the past 10 years, one member of the board said.

"We must approach this problem from a profit and loss standpoint and nothing else," said this regent who asked that his name not be used. "We cannot afford to gamble on having big drawing power to our foot-

ball games year in and year out."

If the regents decide to accept a design leading to a circular grandstand or bowl, the logical step during the coming 10 months would be the addition of a north curve, thus making the stadium U-shaped.

Walter Kraft, chief of the campus utilities department, said that such a plan would add about 20,000 seats to the stadium at a cost of around \$15 to \$20 per seat—or totaling between \$300,000 and \$400,000.

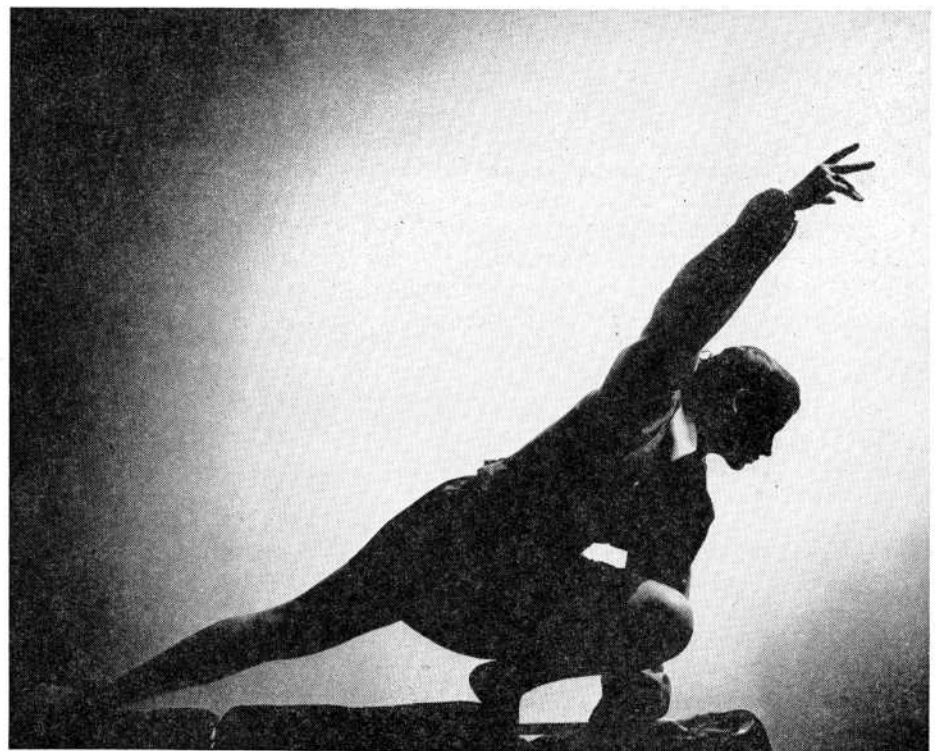
This plan has been advanced more than any other, although the suggestion that a top deck be built on the present west stadium has been made. This would involve expensive new footings if engineering surveys show that the present foundation will not support an estimated 20 rows for the second story of seats. Also the two-decker project would provide only about 5,000 new seats. The cost per seat might be triple what the seats would cost around the end zone.

Erl E. Deacon, '21eng, board member who acted as spokesman, indicated the board hoped to get the construction completed by the 1949 season, but said material shortages and other factors might make such speed impossible.

Other regents, discussing the project informally, said the addition likely will include an addition to the stadium radio and press box—now one of the poorest equipped installations of its kind in the midwest.

The Missouri-Oklahoma game crowd was the largest in O.U. history. Ticket sales for the game, billed as a meeting of the midlands' best, had been stopped weeks before the tilt because of lack of room in the grandstands.

In order to accommodate the crowd which had tickets, temporary bleachers were erected in the end zones, and classroom benches were moved to the sidelines.



The Sooner Photographer catches Miss Peggy Schaper, St. Louis, Missouri, University College student, as she performed during the Homecoming Variety show held in Holmberg hall November 5.