



These watercolor sketches show the interiors of the fountain room and the cafeteria in the new north wing of the Union. Located next to the cafeteria, the fountain room (left) opens onto an outdoor dance terrace. The cafeteria is twice the size of the old one.

Campus Showplace

When the "new" Union opens this fall, it will show that Interior Designer Robert Harrell refuses to be stereotyped. Here is a sneak preview of what he has accomplished.

As the hub of student activities, the "new" Union will be the showplace of the campus. Engineers, architects and interior designer Robert D. Harrell have combined their talents to produce a building characterized by good taste and utility.

Scheduled for opening this fall, the Union is nearing completion. Interior decorations in several parts of the new wings have taken form, and the remainder of

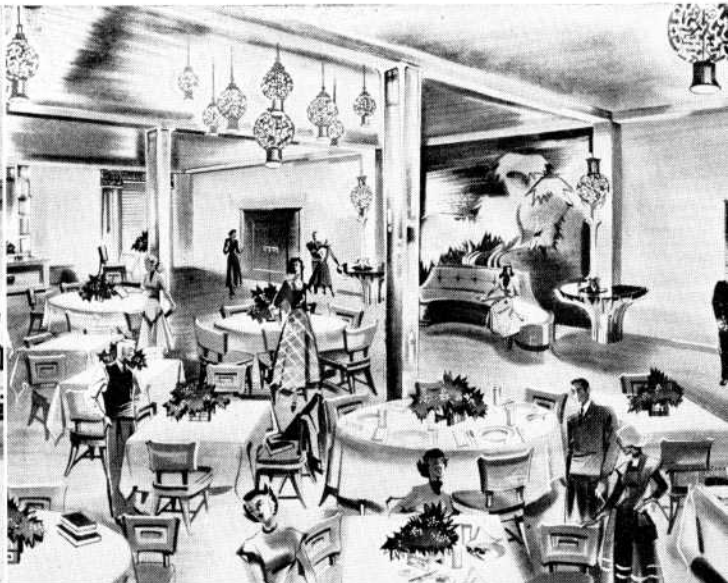
work to be done is advancing rapidly on the \$2,300,000 project.

Workers have moved into the original section of the building and are making alterations which will match the older interior with the two new wings. An international modern theme will extend throughout the entire building, giving it a oneness which Harrell strives for in his interior decoration.

Visitors and alumni who have not been to the campus since the expansion of the Union was begun more than a year ago will be surprised by the size of the completed structure. Extending to the north and south, the new wings almost triple the floor space in the original building.

More striking than the size of the Union is its decorations. The planners kept an eye on comfort, utility and beauty when

The student lounge (left) and the Oriental dining room (right) show how Designer Harrell has used the international modern theme in Union decorations. Planned for comfort and utility, these two rooms are distinctive, yet blend into the oneness of the Union.



the project was in its formative stage. The structure is now near enough to completion to see that they succeeded in building all three into the Union.

The student lounge, located on the main floor, has a dropped ceiling with cove lighting and develops its comfortable atmosphere from green walls and furniture designed by Harrell. Draped windows and a carpeted floor will add to the relaxing atmosphere. There will be a television set in the room, and piped-in music will provide additional entertainment.

The cafeteria, on the ground floor, seats 420 persons and features two serving lines with steam tables. Decorated in coral and beige, the room will have draped windows which face the outdoor terrace to the west. Blonde oak paneling and murals depicting the life of Will Rogers provide a pleasant backdrop. The seating capacity is double that of the old cafeteria.

An oriental motif sets the main dining room apart as a special feature of the new building. Decorated in jade green, it will seat 162 persons. Brass lighting fixtures in the shape of Japanese lanterns will hang from varying heights, and the oriental motif will be further carried out by black doors which are rubbed with a green antique finish. Specially designed furniture will add an individualistic touch to the room, which will have a carpeted floor and draped windows.

Another room planned for relaxation and refreshment is the fountain room, located between an outdoor dance terrace and the cafeteria. It will dispense refreshments to those who dance on the terrace, and it will also catch the overflow from the cafeteria during the rush hours. It is planned to keep the fountain room open late in the evenings so it will be able to serve persons who attend campus activities late in the day. During the daytime hours it will cater to coffee and coke drinkers.

Paneled in random—width natural pine, the room will seat 250 persons. Booths will line the wall, and tables and chairs will fill the center section. It will be lighted by cove fixtures in the center of the ceiling and by cornice fixtures along the wall. Bright red chairs and booth seats will be cushioned with airfoam rubber.

Equipped with a complete kitchen, the fountain room will feature an S-shaped 3-station fountain, a coffee station and a short order bar where sandwiches and cold plate dishes may be ordered.

The expanded building has space for both indoor and outdoor dancing. Located on the top floor of the new north wing, the ballroom can be expanded like an accordion; it is flanked by two dining rooms

which can be expanded into the ballroom by modern folding doors.

Entrances lead onto a roof terrace on the west of the ballroom, and another outdoor terrace flanks the north dining room which can be used as a part of the ballroom. A portable bandstand, which can be moved



ROBERT D. HARRELL
. . . No Stereotypes

Robert D. Harrell, for more than 25 years a leader in the field of interior designing and decorating, is responsible for the striking appearance of the interior of the "New Union."

He recently planned and executed the plush interior of the Shamrock Hotel in Houston, Texas, the largest single job of its kind ever assigned to one man. The beautiful simplicity of the Shamrock stems from Harrell's own statement: "Frills and fancy-work have no place in design, for the keynote of good taste is simplicity."

His decorations for the Union are blended into a oneness which is the motif for the entire building. He has planned the scheme to "make the old so it can not be distinguished from the new."

The thoroughness of a job done by Harrell is illustrated by the year he spent visiting hotels throughout the world before he drew a single plan for the Shamrock Hotel. The same thoroughness has shown itself in his creations for the Union.

"I refuse to be stereotyped," Harrell says. The opening of the Union will show that the man lives up to what he says.

to any location in the ballroom, will be included. Decorated in blue and silver, the room is lighted by cornice fixtures.

An outdoor terrace on the ground level will be used for outdoor dancing. It extends along the cafeteria and fountain room which have entrances from the terrace. Equipped with a permanent outdoor bandshell, the terrace will be decorated with plant niches.

The new south wing houses a 550-seat auditorium and studios for the University Radio Station WNAD. Like the rest of the building, this wing has blonde oak paneling and marble wainscoting along the hallways. Planned for utility, this section of the Union stresses simplicity.

Alumni offices, the Union Business Office and the faculty lounge occupy the mezzanine floor of the north wing. The office section has a modern motif which is carried out with low ceilings, glass panels and recessed lighting. Pastel hues for wall colors and light oak paneling add to the beauty of the office suites.

The faculty lounge has a dropped ceiling and utilizes glass and oak paneling to emphasize the international modern theme.

The original section of the building is undergoing a face lifting which Harrell has said will "make the old indistinguishable from the new." Marble wainscoting has been added to the hallways, and stair cases and worn floors are being refinished. All woodwork is being bleached to a light oak so that it will harmonize with the rest of the building.

Numerous dining rooms, meeting rooms and game rooms will add to the services the Union has offered in the past. These rooms, like the whole of the Union, are decorated in the international modern motif.

Such is the state of the Union as the April issue of the *Sooner* goes to press. The whole building will be thrown open for students, alumni and guests at the beginning of the fall semester.

Occupants for New Union

Sooner Magazine staff members and Mrs. Mary Turnbull, manager of the alumni records office, moved into the new south wing of the Union March 30. They are the first, and only—so far—Union occupants in the new section of the building.

Purpose of the move from the original section of the building was to make room for workmen who are changing the space formerly occupied into a lobby for the auditorium in the new wing. The move is of a temporary nature. Offices for the magazine and records division are now nearing completion in the new north wing of the building.