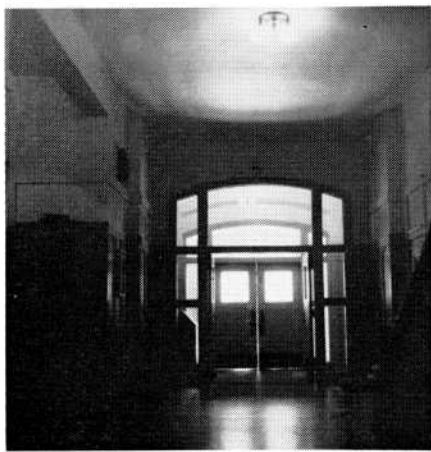


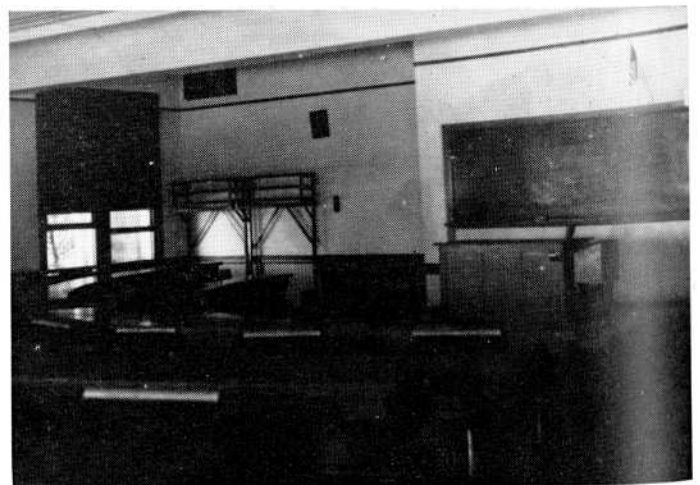


take a look
at the law barn . . .

You Wouldn't



When the prospective lawyer enters the front doors of Monnet Hall these days, he is immediately exposed to some of the freshest and most immaculate surroundings on the University campus. Recent remodeling of the first and second floors of the west half of the building is the largest face lifting the 54-year-old College of Law has received since a six-story east addition to Monnet Hall was constructed in 1952. The original building, named in honor of the late Dean Emeritus Julien C. Monnet, was completed in the fall of 1913. This year's renovation took place in three large classrooms, first and second floor foyers, stairways, the dean's outer office and the Culp Room, and it included the installation of an elevator. With the exception of the Culp Room, all of the work was done by the Constructors Company, Incorporated, of Norman.



A classic ceiling made of acoustical tile, plastic-finished walnut wall paneling, modern light fixtures, aluminum-framed windows and mill-made walnut desks with formica tops are only a few of the conveniences which have changed an old classroom (above) into a more comfortable new one (left) for law students in O.U.'s Monnet Hall.

Recognize the Place



The Culp Room (above) gives the appearance of 18th century English with its wall-to-wall carpeting of heavy wool, off-white woodwork, marble facing around the fireplace and walls covered by rich florentine paper with red-striped flock. The drapery, surrounding the casement curtains at the window, is of a hard floral pattern with dark green background. The Georgian English style furniture includes a sofa covered with imported quilt weave material in old red, English wing chairs, mahogany desk and tables and pictures of old English subjects. All of the room's decorations were under the supervision of Robert Shead, Incorporated, Oklahoma City.



First floor changes are most evident around the Monnet portrait (above and right) and near the stairs (below).

