

Richmond  
1986

Capital of Southern Hospitality



The Mosque



RICHMOND  
1782

Street lamp in Richmond



Cathedral of St. Peter and St. Paul (Washington Cathedral)



State Capitol, Richmond



Bethesda Cinema 'n' Drafthouse



Bethesda Cinema 'n' Drafthouse Wurlitzer console



Richmond Marriott Hotel



Carpenter Center 3/21 mostly Wurlitzer



Carpenter Center



Interior of Sixth Street Market Place



Mosque 3/17 Wurlitzer



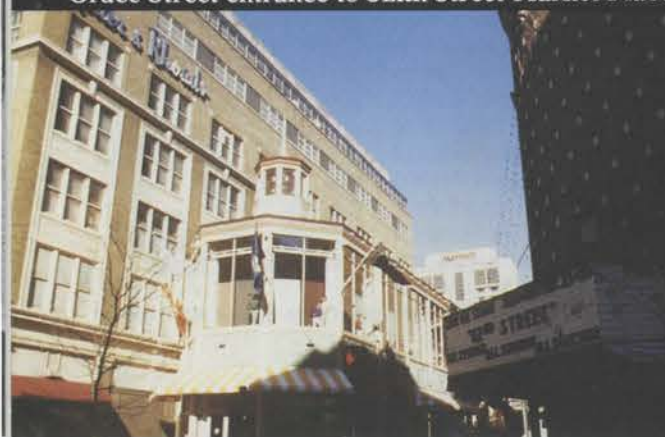
Washington Cathedral organ pipework



Byrd Theatre 4/17 Wurlitzer



Byrd Theatre



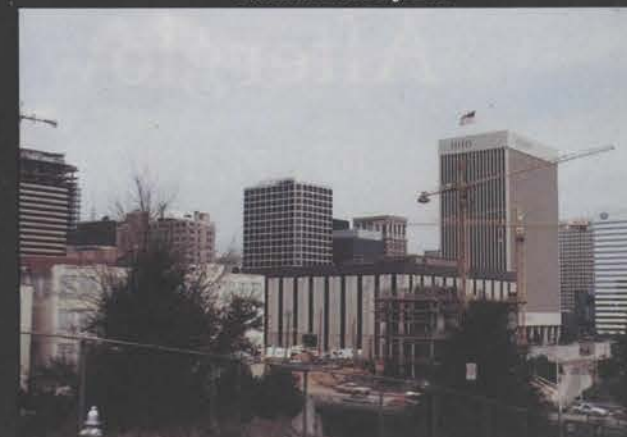
Grace Street entrance to Sixth Street Market Place



Maj. Gen. J. E. B. Stuart statue



General Robert E. Lee statue



Richmond skyline





# Richmond 1986

Capital of Southern Hospitality

## 31st Annual ATOS Convention July 6 - 10, 1986

---

## Williamsburg Afterglow

July 11, 1986

Your 1986 ATOS National Convention will begin on Sunday, July 6, with the ATOS Registration Counter open for business at 10:00 a.m. in the Lower Level North of the Richmond Marriott Hotel. Follow the signs to this area of the hotel. There will be plenty of Hospitality people on hand to assist you. For those arriving early, the Registration Counter will also be open on Saturday, July 5, from 2:00 p.m. to 5:00 p.m. Convention packets will be given to you upon registration and will contain all the information needed, plus your name badge, Pocket Pal, and Banquet and Williamsburg Afterglow tickets. If you haven't yet registered, your friendly Hospitality Hosts and Hostesses will be happy to accept your registration fee and furnish you with your proper complement of items for your convention packet. Visit our Convention Record Store all day Sunday, as well as the exhibit rooms showing the latest in electronic organs.

The first official event of the 1986 ATOS Convention will be the Opening Concert by **Walt Strony** on Sunday, July 6 at 8:00 p.m. at the Carpenter Center for the Performing Arts, on the newly-installed 3/21 mostly-Wurlitzer, part-Gottfried organ previously installed in the Surf City Hotel in New Jersey. The Carpenter Center, formerly Loew's only Richmond movie palace, is located one block from the Marriott at the corner of Sixth and Grace Streets, adjacent to the Sixth Street Festival Marketplace. Architect John Ebersson, famous for his "atmospheric" designs, created at Loew's a beautiful Spanish garden canopied by a blue sky with twinkling stars and drifting clouds. The concert will be preceded by a no-host cocktail party at the Carpenter Center beginning at 6:30 p.m.

Monday morning at the hotel will afford an opportunity to attend scheduled seminars on various topics, to visit the Record Shop and electronic organ showrooms, or to shop or tour in the downtown area. The seminars will be held from 8:45 a.m. to 10:45 a.m. At 11:00 a.m. there will be the Annual Chapter Representatives meeting with the Board of Directors.

On Monday afternoon we will travel the short distance to The Mosque for a 2:30 p.m. concert by Richmond's own **Eddie Weaver** on the Mosque's 3/17 Wurlitzer "Model 260 Special." The Mosque is one of the most spectacular Moorish revival buildings of the 1920s and its vast auditorium in Moorish style is one of the city's most handsome interiors.

After dinner in a restaurant of your choice, we will load buses for a short ride to the Byrd Theatre and an 8:30 p.m. evening concert by **Lyn Larsen** on the Byrd's 4/17 Wurlitzer Hope-Jones Unit Orchestra, one of the finest examples of an original in-theatre instrument that can be found. The Byrd Theatre was designed in the style of an opera house and is richly decorated in the Italian Rococo style.

Tuesday, July 8, will begin with a 9:30 a.m. concert by **Jim Roseveare** at The Mosque. The Annual Membership Meeting will be held immediately following the concert at approximately 11:30 a.m. at The Mosque. Following the Membership Meeting, we will again afford the opportunity to attend scheduled seminars on various topics beginning at 3:30 p.m., to visit the Record Shop and electronic organ showrooms, to shop the downtown area, or to visit and socialize with friends. Tuesday evening we will be bused to the Byrd Theatre for an 8:30 p.m. evening concert featuring **Ron Rhode**.

On Wednesday, July 9, the Convention will take to the road at 7:30 a.m. as we travel to Richmond's northernmost suburb, Washington, D.C. We will travel in the morning in two sections to the Bethesda Cinema 'n' Drafthouse in Bethesda, Maryland, where we will hear **Martin Ellis** on the Wurlitzer there. While one group is attending the first concert, the other group will be provided an early lunch. We will then switch the two groups and repeat the earlier concert.

On Wednesday afternoon both groups will join up for a 1:30 p.m. concert by **Tom Hazleton** at the majestic Gothic Cathedral of St. Peter and St. Paul, also known as the Washington or National Cathedral. Built and supported by free-will gifts, this great Episcopal Church opened in 1912 but is under construction still. The building itself is beyond description, rivalling any European cathedral in size and beauty. The four-manual-and-pedal Great organ was designed and built in 1937-38 by Ernest M. Skinner and Son of Boston, and is in eight divisions with well over 10,000 pipes. Our schedule will allow time to relax on the Cathedral grounds and shop in the gift shop. We will arrive back in Richmond around 7:00 p.m. with the evening free



for dinner on your own.

Thursday, July 10, will begin with a 9:30 a.m. concert by **Chris Elliott** at the Carpenter Center for the Performing Arts. We will then return to the hotel until we load buses for a 2:30 p.m. afternoon concert at the Byrd Theatre featuring **Lin Lunde** accompanying the famous silent movie *Wings*.

Upon your return to the hotel, you will have plenty of time to get ready for the pre-Banquet cocktail party at the Marriott beginning at 6:00 p.m. The Banquet will begin at 7:30 p.m. and the efficient staff of the Marriott is planning a delicious cuisine for us featuring prime rib of beef. Tables will be round for ease of conversation, and you and your friends may reserve tables at the time of registration, if you

like, and thus be seated together. The Richmond Marriott is renowned in Richmond for its excellent food, and this banquet will be no exception. Following the usual entertaining and informative festivities, there will be time for visiting with friends.

While we anticipate that there will be no program changes, the above schedule of events is based upon the availability of theatres, organs, and artists, and except for the Annual Membership Meeting, certain events may be subject to change.

With a great list of artists and an outstanding variety of organs and installations, we invite you to join your friends for the 1986 ATOS Convention. On to Richmond, Capital of Southern Hospitality and a great place to visit since 1607. Y'all come! □



# Colonial Williamsburg

FRIDAY, JULY 11, 1986

For the Convention Afterglow, we will travel to Colonial Williamsburg where life today is lived as it was nearly three centuries ago. After a half-century of preservation and restoration, Colonial Williamsburg now offers an unparalleled view of eighteenth century life.

We will begin our Afterglow with a 9:30 a.m. concert at Bruton Parish Church by **James S. Darling**, Organist and Choirmaster at historic Bruton Parish. Located in the midst of the Restored Area in Virginia's colonial capital, the church has a membership of over 1200, and with over a million visitors a year, the Bruton Parish Aeolian-Skinner organ is one of the most heard organs in the United States.

Following the concert at Bruton Parish, you will be free for the remainder of the day to tour Colonial Williamsburg — the Royal Governor's Palace, the Colonial Capital, the colonial residences, public buildings, and busy craft shops. Your general admission ticket to Colonial Williamsburg also includes free bus service throughout the Re-

stored Area. During the afternoon a series of recitals will be played by **Thomas Marshall** on the Wren Chapel organ, ascribed to John Snetzler, ca. 1760, and formerly located in Kimberly Hall, Norfolk, England. It is a remarkable instrument consisting of one keyboard, no pedal, two 8' and 4' stops, one 2' and one 2-2/3'. Its brilliant voicing fills the Wren Chapel with excitement. The Wren Building at the College of William and Mary is the oldest academic building in the English United States.

The activities in Colonial Williamsburg will conclude with a no-host reception at the Williamsburg Conference Center at 6:00 p.m. followed by "A Colonial Feast" in the Virginia Room of the Conference Center.

This step into Colonial Williamsburg and our 18th Century history will be yours if you are among the first 350 to register. □

Turn this page and see what you'll see ►

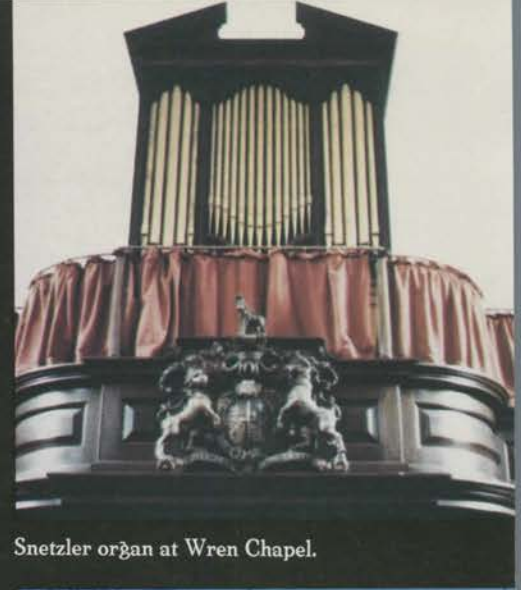




The Bruton Parish Church and its four-manual Aeolian Skinner Organ Console.

# The Afterglow at Colonial Williamsburg

Hosted by the Virginia Chapter



Snetzler organ at Wren Chapel.



Wren Building housing Wren Chapel at the College of William and Mary, Williamsburg.

## THE WILLIAMSBURG SCENE





# CONVENTION REGISTRATION INFORMATION

Convention registration may be accomplished by completing the form printed on the mailing wrapper of this issue of THEATRE ORGAN. Please fill out the form **legibly** and **completely**; it will be used to prepare your name badge and your convention packet. Convention registration is limited to current members of ATOS, so please print or type your name as it appears on the address label of this issue's mailing wrapper. We have also provided a place for you to list your name as you wish it to appear on your name badge.

Your convention registration fee includes admission to all shows, concerts, workshops, and seminars. It includes all transportation to and from all regularly scheduled Convention events, some meals, convention brochure, and other materials. Late-night trips to the Byrd Theatre are optional, so there will be an additional small transportation charge for the buses with tickets available at the Hospitality Desk. All transportation will be on modern air-conditioned city and highway motor coaches.

The Convention Banquet will be held on Thursday evening in the spacious Capital Ballroom, and the pre-Banquet Cocktail Reception, a dress-up affair in elegant surroundings, will be held in the Capital Ballroom Foyer. Although the Banquet is optional, the evening promises to be one of the Convention highlights. You won't want to miss the Banquet activities.

The Williamsburg Afterglow will be hosted by the Virginia Chapter on Friday, July 11. The Afterglow price includes comfortable, air-conditioned bus transportation to and from Williamsburg (about an hour's ride), a concert at Bruton Parish Church, general admission ticket to Colonial Williamsburg for the day, an afternoon recital at the Wren Chapel of the College of William and Mary, and "A Colonial Feast" in The Virginia Room of the Williamsburg Conference Center. There is a limit of 350 for the Williamsburg Afterglow, and tickets will be allocated in the order of registration receipt.

The registration fees are listed below and on the Registration Form. To encourage early registration, please note that registrations bearing a postmark after June 1, must include a \$10.00 late charge. If you have questions or need additional information, please contact Sharolyn Heatwole, P.O. Box 7082, Richmond, Virginia 23221; phone 804/744-1738 (evenings and weekends).

## CONVENTION REGISTRATION FEES

Convention Registration .....	\$130.00
Banquet Registration .....	30.00
Williamsburg Afterglow .....	60.00
Late Registration Fee (if postmarked after 6/1/86) .....	10.00

Make checks payable to ATOS CONVENTION '86. If using VISA or MasterCard, be sure to indicate which, include your account number, expiration date, bank number if using MasterCard, and your signature. Mail convention registration form and check to:

Sharolyn Heatwole  
P.O. Box 7082  
Richmond, VA 23221

All registrations will be confirmed promptly by return mail.

## CANCELLATIONS

Full refund will be made for Convention registration if cancellation is postmarked prior to June 1, 1986. If the cancellation is postmarked between June 1 and June 15, 1986, a full refund less a \$20.00 service charge will be made. If Convention registration is cancelled between June 16 and the start of the Convention on July 6, 1986, a refund less a \$75.00 service charge will be made.

## HOTEL RESERVATIONS

Hotel reservations **must** be made **separately** by using the HOTEL RESERVATION FORM also printed on the mailing wrapper of this issue. Taking care of ONE does NOT take care of the OTHER!

## SPECIAL ATOS CONVENTION '86 ROOM RATES

Single .....	\$48.00 per day
Double .....	58.00 per day
Triple .....	68.00 per day
(All rates are subject to 6% sales tax)	

The Richmond Marriott will honor these special Convention rates until June 15, 1986; beyond that date no guarantees can be made, although the hotel will continue to accept reservations so long as rooms are available. If you anticipate arrival at the hotel after 6:00 p.m., prior arrangements are required to guarantee your reservation. The Richmond Marriott will accept most major credit cards, and all guests will be asked to show a card prior to check-in as a means of identification. Without a major credit card as identification, guests will be asked to pay in advance. Hotel check-in time is 4:00 p.m. Rooms may be available earlier in the day, but prior arrangements should be made directly with the hotel. The Richmond Marriott's address is 500 East Broad Street, Richmond, Virginia 23219, and the telephone number is 804/643-3400.

The Richmond Marriott is one of the city's finest and newest major hotels. It is located in the heart of Downtown at the corner of Broad Street (U.S. 250) and Fifth Street, across the street from Richmond's major department stores and adjacent to the new Sixth Street Festival Marketplace. There are three restaurants in the hotel and numerous restaurants within walking distance of the hotel including the Festival Marketplace. For those driving, there is plenty of parking both across Fifth Street from the hotel (no charge for registered guests) or behind the hotel in a multi-storied parking garage that is connected to the hotel by a second-floor walkway over Marshall Street (no charge for registered guests). Byrd International Airport serving the Richmond metropolitan area, is a short and convenient 10-minute cab ride from the Richmond Marriott.

## ALTERNATE HOTELS

When the Richmond Marriott Hotel has been fully booked, it will advise you by telephone that it cannot accept your reservation and will provide you with the telephone numbers of two alternate hotels holding additional rooms for the ATOS Convention. Please include the telephone number where you can be reached most conveniently on the hotel reservation form. The Richmond Marriott will *not* make reservations for you at these hotels; you must contact an alternate hotel direct.

Two alternate hotels are holding additional rooms through June 15, 1986. The first is the Best Western Marketplace Hotel, a newly-renovated 140-room hotel two blocks from the Richmond Marriott and adjacent to the Sixth Street Festival Marketplace. It is located at 7th and Marshall Streets, telephone number 804/649-2378. The second hotel is the new Ramada Renaissance Hotel (opening June, 1986), a 300-room hotel five blocks from the Marriott in the city's financial district at 555 East Canal Street, telephone number 804/788-0900. Bus service will be provided from the Ramada Renaissance to all Convention concerts. Room rates at both hotels through June 15, 1986, will be the same as those at the Richmond Marriott.

## PHOTOGRAPHY AND TAPE RECORDING

Photography and tape recording at concerts always present a dilemma because of the possibility that one person's delight and enthusiasm in making tapes or photos can substantially interfere with another person's delight in enjoying the music and sights without being disturbed.

We request that convention attendees exhibit the courtesy of being considerate of others in the audience and refrain from activities that produce visual and audible interferences with the program. Therefore, please:

DO NOT use flash, strobos, or auxiliary lighting for photography.

DO NOT obstruct the view with microphone stands, tripods, booms, wires, etc., and

DO NOT operate equipment that grinds, whirs, buzzes, howls, squeaks, clicks, snaps, crackles, or pops.

DO refrain from talking and visiting during the performances.

Our artists will be available for photos after the concerts and you can flash to your heart's content — but don't miss your bus! □