

San Diego Encore

by Harry Heth

When we arrived at Balboa Park in San Diego, we were given a reasonable box lunch and sufficient time to eat and look around the park. The new console was an excellent replica of the original, which had deteriorated from the exposure in its outdoor environment. The 4/52 Austin organ, installed in 1914, seemed much improved since its last convention use in 1979. Keith Chapman played an excellent, although heavily academic, program. Perhaps a little less "proper" organ music and more organ transcriptions of symphonic works would have better held the attention of the audience.

A short bus ride brought us to the California Theatre and its 3/23 Wurlitzer. We were greeted by a hand-operated mini-calliope in the lobby which was played from perforated card strips. George Wright, who was obviously having fun, played to an almost full house (This concert was open to the public.). George delighted us with some nostalgia, a warm tribute to Fred Astaire and a not-so-serious salute to Jim and Tammy Bakker.

Another short ride brought us to the harbor where we boarded the three Show Boats for dinner and a harbor cruise. The food was quite well-prepared and nicely served. During the tour of the harbor aboard the pseudo stern-wheelers, we got a good look at some of the military floating stock purchased with our tax dollars.



George Wright at the California Theatre in San Diego. (Connie Reardon photo)



Stage at California Theatre ready for George.

(HH photo)



Just a few of the busses that carried ATOSers to San Diego.

(RVS photo)



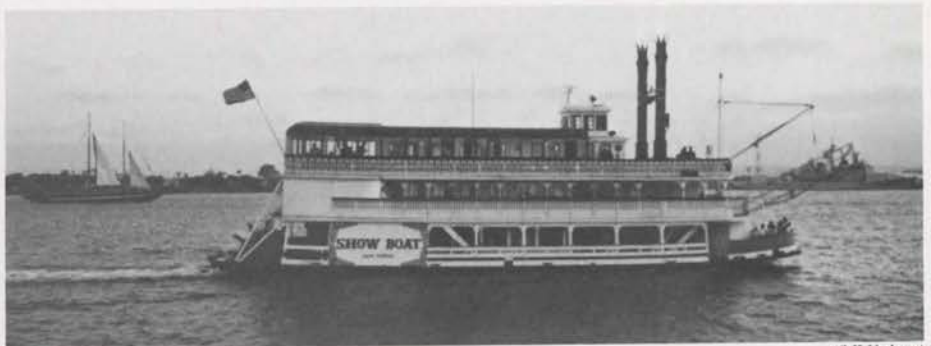
President Jack Moelmann on stage at Balboa Park — No, he was not the organist that day.

(MLV photo)



Keith Chapman and Lew Williams in San Diego.

(MLV photo)



(MLV photo)



Joe Butler and Dave Fielding — a long way from Texas — enjoying coffee on the deck of the Show Boat.

(HH photo)

At Right: A mostly from Denver group on the Encore dinner-cruise in San Diego Bay.

(HH photo)



Waiting for the concert to begin at Balboa Park.

(HH photo)

