

## President's Message cont.

wordy (so what else is new) and maybe a little more negative than I originally intended (so what else is new . . . again), but when it was discovered that, while a new president has been selected by the time you read this, there was no time for him or her to write this message, I was given one last opportunity to climb upon my now worn soapbox. Let me leave you with one final thought: The prognosis for the future of the society is good, but we need YOU to make it happen.

Until we meet again, I remain,  
Sincerely,

John B. Ledwon

## 1991 National ATOS Election Results

Jack Moelmann . . . . .	1385
Jim Riggs . . . . .	1377
Paul Quarino . . . . .	926
Ralph Beaudry . . . . .	805
Alden Stockebrand . . . . .	722
Edith Rawle . . . . .	632
Laurel Haggart . . . . .	510
Chuck Wiltsch . . . . .	310
Hal Pritchard . . . . .	294
Cyndae Koller . . . . .	273
Jim Koller . . . . .	195
Write ins . . . . .	26
Total ballots received . . . . .	2569
Disqualified . . . . .	8
(more than 3 voted for)	
Total ballots counted . . . . .	2561
Overseas ballots received . . . . .	96
Submitted by Margret Ann Foy, May 21, 1991	

## Letters cont.

on theatre organ by listening to Fred Feibel's "Organ Reveille" as we prepared for school and "Ann Leaf at the Organ" when we arrived home in the afternoon. Other organists I recall were Esther Leaf, Betty Gould, C.A.J. Parmentier and Fats Waller. The organ was so versatile that each organist made it sound different.

During WWII, Columbia Pictures made a series of sing-along movies featuring Lew White, Don Baker and Dick Leibert for armed forces theatres.

This organ should be preserved in its original condition for present day and future listeners.

Sincerely,  
Al Hermanns,  
Clearwater, Florida

## New Scholarship Program of ATOS

Members of the Scholarship Committee are pleased to announce that the following students are the recipients of \$500 scholarships. These scholarships are to further their studies with professional theatre organ teachers.

All the scholarships were awarded in compliance with category "B" of the Scholarship Program. The committee was very impressed with the qualifications and resumes submitted.

**SIMON PHILIP APPEYARD (16)**  
England

Teacher - Joyce Alldred

**ZACHARY CUTFORTH (13)**

Joliet, Illinois

Teacher - Lee Maloney

**JELANI EDDINGTON (16)**

Muncie, Indiana

Teacher - John Ferguson

**SUSAN J. LEWANDOWSKI (13)**

Madison Heights, Michigan

Teacher - Melissa Ambrose

**ALICIA LUPA (16)**

Citrus Heights, California

Teacher - Joyce Clifford

**KEN MERLEY (15)**

Troy, Michigan

Teacher - Steve Schlesing

**ELENOR B. NARDY (16)**

Alta Monte Springs, Florida

Teacher - Ken A. Stoope

Members of the Scholarship Committee are:

JOHN LEDWON  
DAVID LOVE  
CONNIE PURKEY  
CHARLOTTE RIEGER  
LOIS SEGUR  
JINNY VANORE

Dorothy VanSteenkiste, Chairman  
ATOS Scholarship Committee

## Walt Strony Seminar

Registration for the  
August 17 Seminar at the  
Krughoff residence may be  
sent to:

**GIB PETZKE**  
419 West Oakdale Avenue  
Chicago, Illinois 60657  
Phone: 312/248-5371

ORGAN BUILDERS. . .  
**SIMPLIFY  
YOUR ORGAN  
INSTALLATIONS**

**MULTI-ACTION  
ORGAN CONTROL**



**THE STANDARD OF THE INDUSTRY**

If you are rebuilding a large pipe organ and have a deadline to meet, simplify the task by using the Devtronix **MULTI-ACTION Computer Control Unit**

**WHAT OTHER SYSTEM CAN—**

*FUNCTION AS A*

- RELAY
- COMBINATION ACTION
- RECORD & PLAYBACK

*IN ONE SMALL PACKAGE WITH VERY LITTLE HARDWARE OR WIRING?*

**WHAT OTHER SYSTEM CAN—MAKE SPECIFICATION CHANGES IN SECONDS WITHOUT TOUCHING A SOLDERING IRON?**

**WHAT OTHER SYSTEM CAN—REQUIRE NO MAINTENANCE BECAUSE OF ITS HIGH RELIABILITY?**

**WHAT OTHER SYSTEM CAN—BE USER FRIENDLY?**

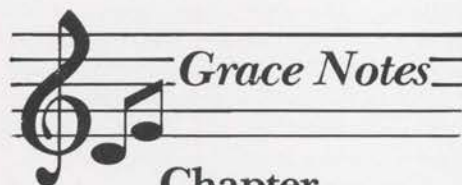
**EXCELLENT WIRING AND OPERATING MANUALS**

**INSTALLATIONS  
ACROSS THE U.S. AND ABROAD**

Save time and trouble with this remarkable system—write today for free brochure



1923 AVONDALE AVE., SACRAMENTO, CA 95825  
(916) 971-9074



## Chapter Correspondents:

PLEASE CHECK THE QUALITY OF THE PHOTOS YOU SEND TO THE JOURNAL. MANY ARE TOO LIGHT (FLASH TOO CLOSE) AND SOME ARE OUT OF FOCUS. WE WOULD LIKE TO GIVE YOU THE BEST QUALITY POSSIBLE, BUT WE NEED YOUR HELP!

Editor